



Recorded Crime June Quarter 2009 Northern Territory – key findings*

Explanatory Notes

Largely as a result of its small population, statistics in the Northern Territory can be highly volatile with large swings from one period to the next.

Consequently recorded crime statistics are presented over an extended period to present the current period's data within the context of any longer term trends.

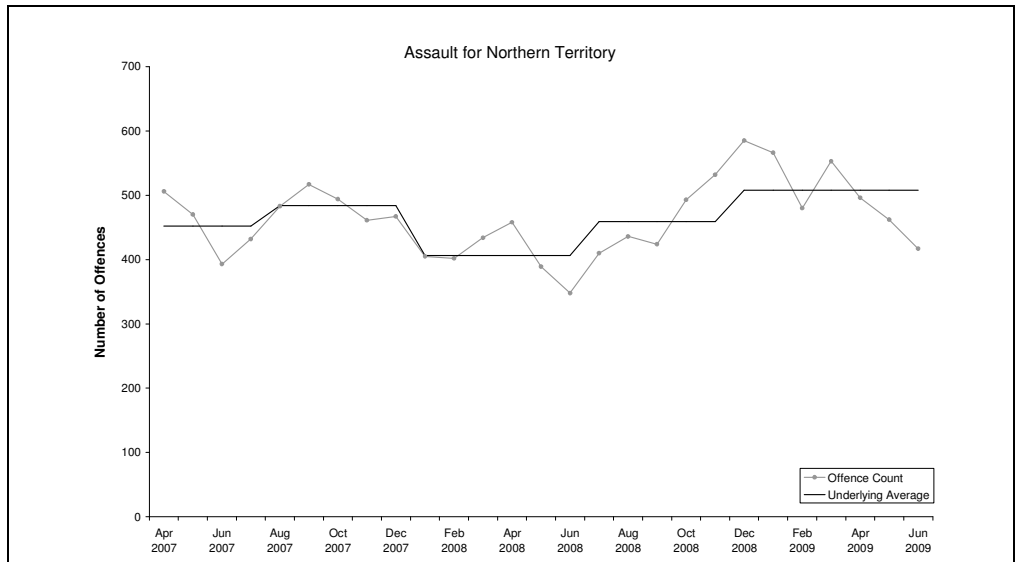
The underlying average smooths out volatility and identifies major changes in the level of crime.

ASSAULT

Underlying average – The underlying average level of *assault* has ranged between 406 and 508 offences per month during the past nine quarters. Its current level of **508 per month** is at the higher end of the range.

Trend – Over the past 12 months no trend was identified.

Quarterly comparisons – There were 1375 *assault* offences recorded in the current quarter, a **decrease of 14% (224)** from the previous quarter, but an increase of 15% (180) from the same quarter the previous year.

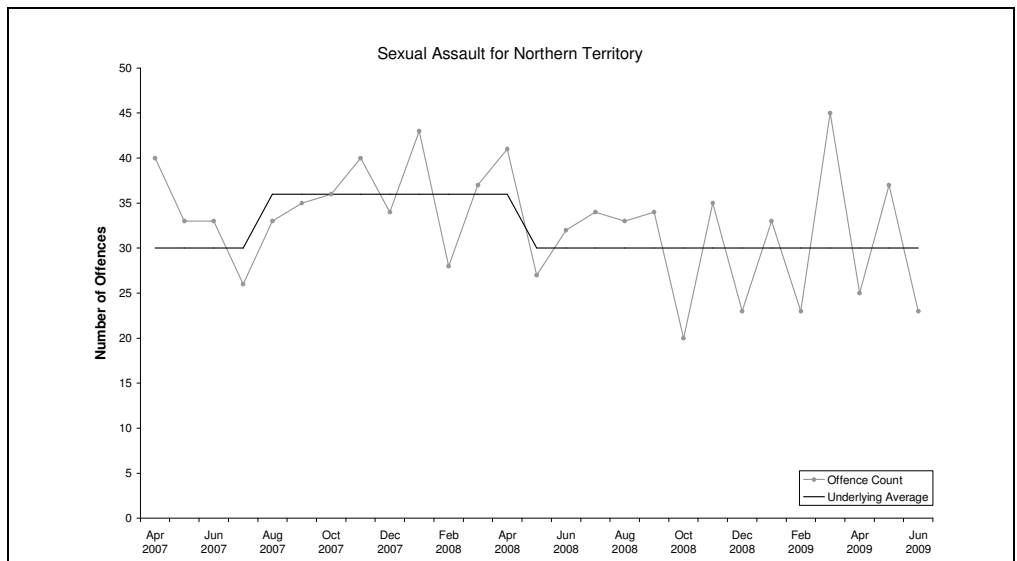


SEXUAL ASSAULT

Underlying average – The underlying average level of *sexual assault* has ranged between 30 and 36 offences per month during the past nine quarters. Its current level of **30 per month** is at the lower end of the range.

Trend – Over the past 12 months no trend was identified.

Quarterly comparisons – There were 85 *sexual assault* offences recorded in the current quarter, a **decrease of 16% (16)** from the previous quarter and a decrease of 15% (15) from the same quarter the previous year.



* Source: The Northern Territory Quarterly Crime & Justice Statistics, Issue 28: June Quarter 2009



Recorded Crime June Quarter 2009 Northern Territory – key findings*

Explanatory Notes

Largely as a result of its small population, statistics in the Northern Territory can be highly volatile with large swings from one period to the next.

Consequently recorded crime statistics are presented over an extended period to present the current period's data within the context of any longer term trends.

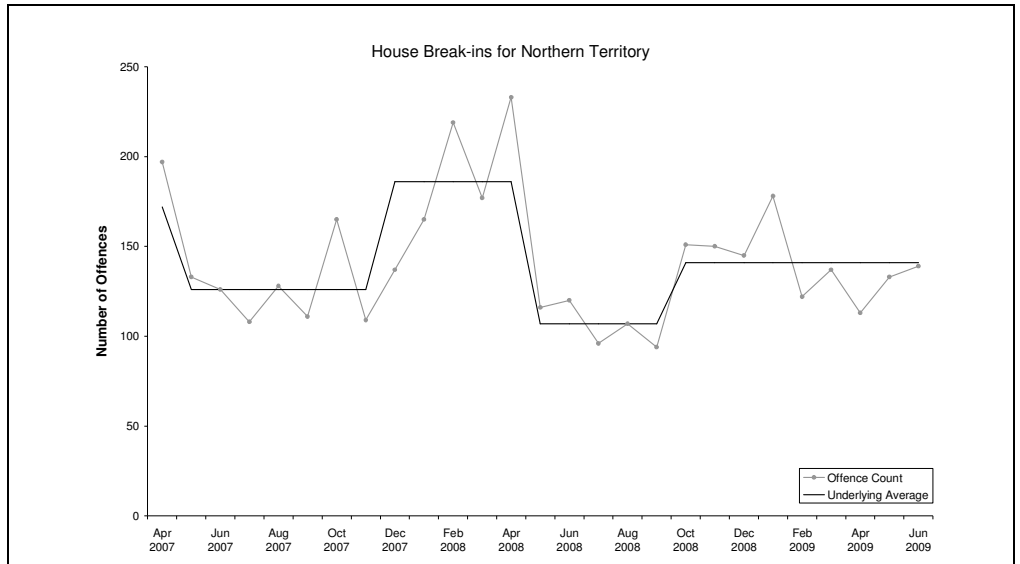
The underlying average smooths out volatility and identifies major changes in the level of crime.

HOUSE BREAK-INS

Underlying average – The underlying average level of *house break-ins* has ranged between 107 and 186 offences per month during the past nine quarters. Its current level of **141 per month** is in the middle of the range.

Trend – Over the past 12 months no trend was identified.

Quarterly comparisons – There were 385 *house break-in* offences recorded in the current quarter, a **decrease of 12% (52)** from the previous quarter and a decrease of 18% (84) from the same quarter the previous year.

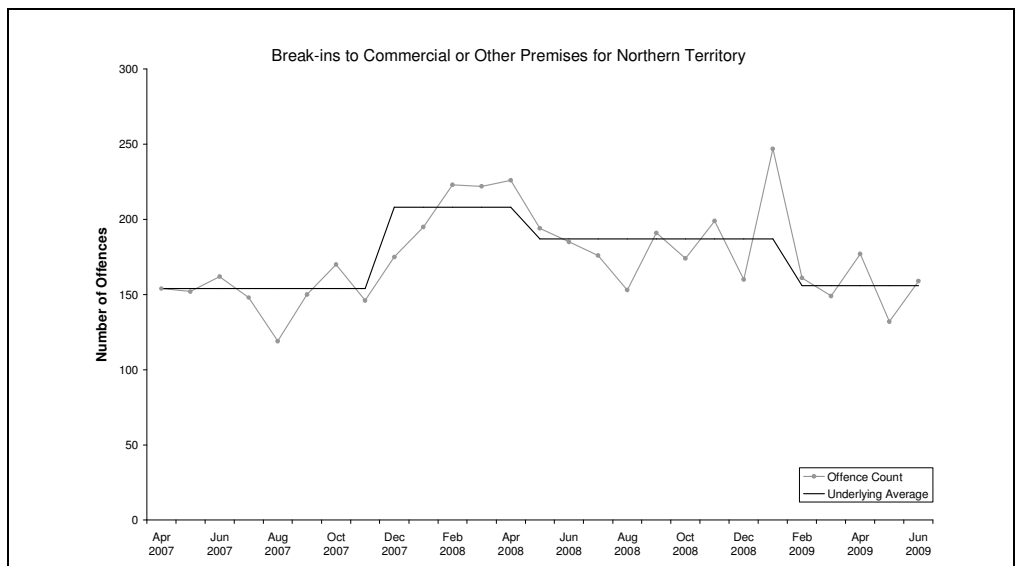


BREAK-INS TO COMMERCIAL OR OTHER PREMISES

Underlying average – The underlying average level of *break-ins to commercial or other premises* has ranged between 154 and 208 offences per month during the past nine quarters. Its current level of **156 per month** is at the lower end of the range.

Trend – Over the past 12 months no trend was identified.

Quarterly comparisons – There were 468 *break-ins to commercial or other premises* offences recorded in the current quarter, a **decrease of 16% (89)** from the previous quarter and a decrease of 23% (137) from the same quarter the previous year.



* Source: The Northern Territory Quarterly Crime & Justice Statistics, Issue 28: June Quarter 2009



Recorded Crime June Quarter 2009

Northern Territory – key findings*

Explanatory Notes

Largely as a result of its small population, statistics in the Northern Territory can be highly volatile with large swings from one period to the next.

Consequently recorded crime statistics are presented over an extended period to present the current period's data within the context of any longer term trends.

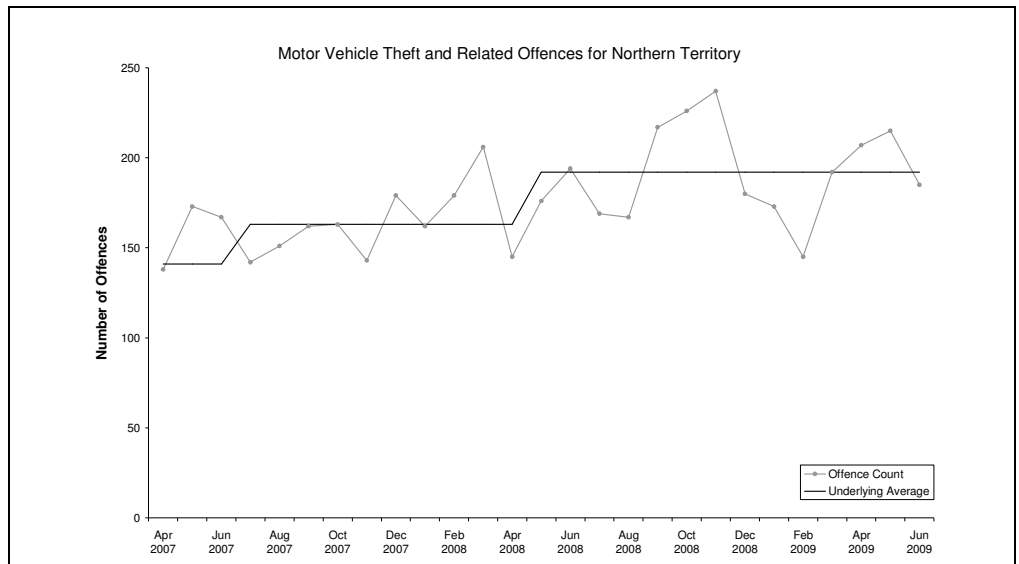
The underlying average smooths out volatility and identifies major changes in the level of crime.

MOTOR VEHICLE THEFT AND RELATED OFFENCES

Underlying average – The underlying average level of *motor vehicle theft and related offences* has ranged between 141 and 192 offences per month during the past nine quarters. Its current level of **192 per month** is at the higher end of the range.

Trend – Over the past 12 months no trend was identified.

Quarterly comparisons – There were 607 *motor vehicle theft and related offences* recorded in the current quarter, an **increase of 19% (97)** from the previous quarter and an increase of 18% (92) from the same quarter the previous year.



* Source: The Northern Territory Quarterly Crime & Justice Statistics, Issue 28: June Quarter 2009



Recorded Crime June Quarter 2009

Northern Territory – key findings*

Explanatory Notes

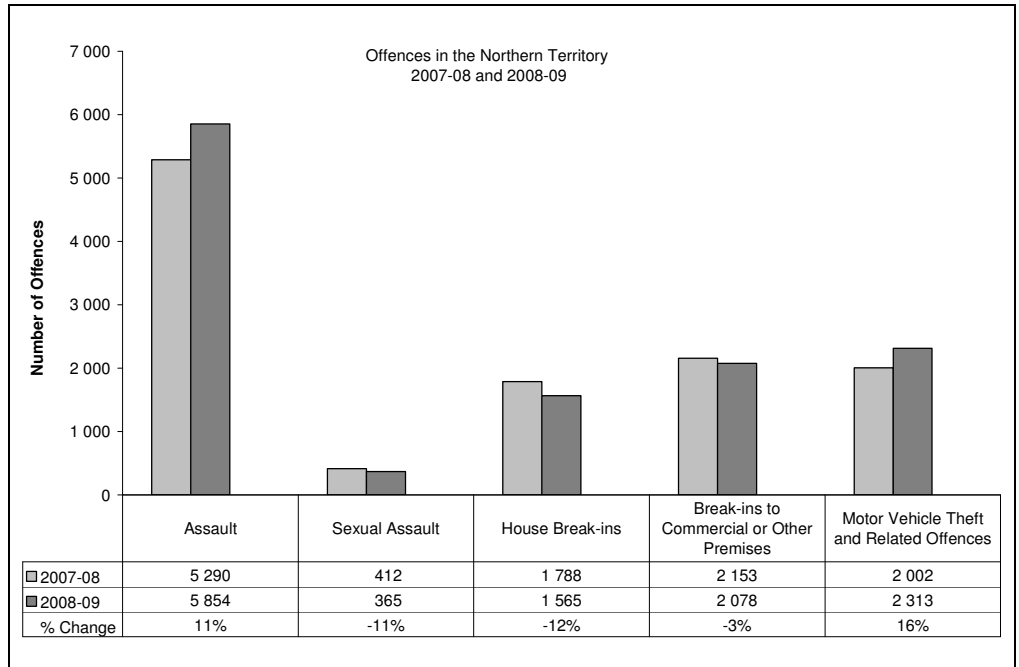
Largely as a result of its small population, statistics in the Northern Territory can be highly volatile with large swings from one period to the next.

Consequently recorded crime statistics are presented over an extended period to present the current period's data within the context of any longer term trends.

The underlying average smooths out volatility and identifies major changes in the level of crime.

TWELVE-MONTH COMPARISON

Twelve-month figures provide comparable information on how crime has tracked from one 12 month period to the next.



Assault

During 2008-09, a total of 5854 *assault* offences were recorded, **11% (564) more** than in 2007-08.

Sexual Assault

During 2008-09, a total of 365 *sexual assault* offences were recorded, **11% (47) less** than in 2007-08.

House Break-ins

During 2008-09, a total of 1565 *house break-ins* were recorded, **12% (223) less** than in 2007-08.

Break-ins to Commercial or Other Premises

During 2008-09, a total of 2078 *break-ins to commercial or other premises* were recorded, **3% (75) less** than in 2007-08.

Motor Vehicle Theft and Related Offences

During 2008-09, a total of 2313 *motor vehicle theft and related offences* were recorded, **16% (311) more** than in 2007-08.

* Source: The Northern Territory Quarterly Crime & Justice Statistics, Issue 28: June Quarter 2009



Recorded Crime June Quarter 2009

Northern Territory – key findings*

Explanatory Notes

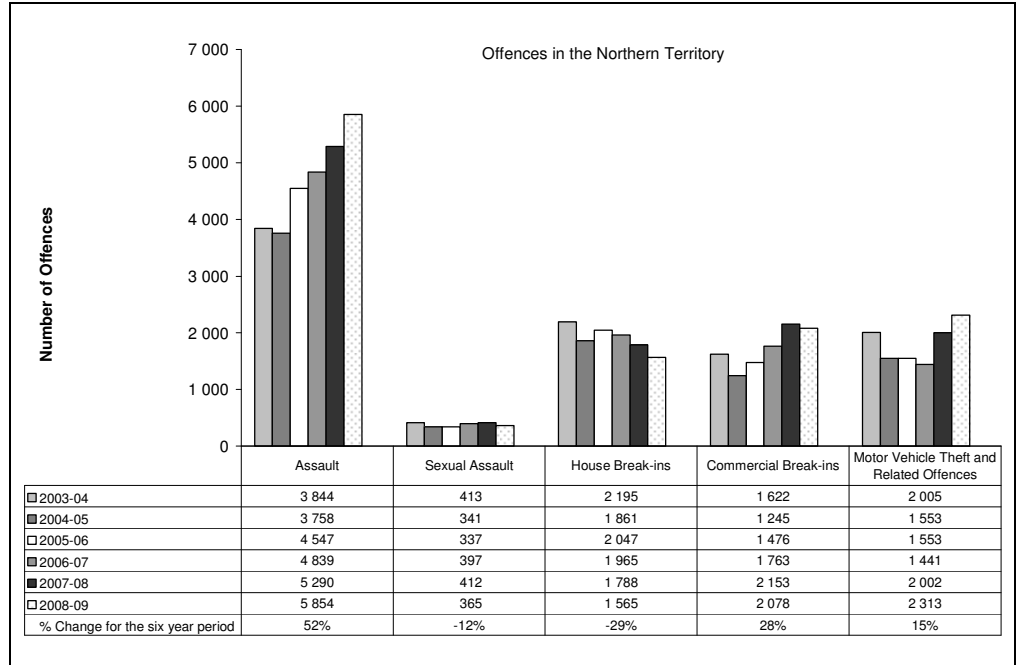
Largely as a result of its small population, statistics in the Northern Territory can be highly volatile with large swings from one period to the next.

Consequently recorded crime statistics are presented over an extended period to present the current period's data within the context of any longer term trends.

The underlying average smooths out volatility and identifies major changes in the level of crime.

SIX YEAR DATA

Data presented over a six year period provides information to see how recorded crimes have tracked in the longer run.



Assault

In late 2004, the Northern Territory Police launched their Violent Crime Reduction Strategy, with a consequential increase in the number of recorded Assault offences in 2005 and subsequent years.

These increases in Assaults largely reflect the impact of operational changes the Police have made in the reporting and recording of domestic violence related Assaults.

During 2008-09, there were 5854 recorded *assault* offences, **52% (2 010) more** than in 2003-04.

Sexual Assault

During 2008-09, there were 365 recorded *sexual assault* offences, **12% (48) less** than in 2003-04.

House Break-ins

During 2008-09, there were 1565 recorded *house break-in* offences, **29% (630) less** than in 2003-04.

Commercial Break-ins

During 2008-09, there were 2078 recorded *commercial break-in* offences, **28% (456) more** than in 2003-04.

Motor Vehicle Theft and Related Offences

During 2008-09, there were 2313 recorded *motor vehicle theft and related offences*, **15% (308) more** than in 2003-04.

* Source: The Northern Territory Recorded Crime data extract for June Quarter 2009



Recorded Crime June Quarter 2009

Darwin – key findings*

Explanatory Notes

Largely as a result of its small population, statistics in the Northern Territory can be highly volatile with large swings from one period to the next.

Consequently recorded crime statistics are presented over an extended period to present the current period's data within the context of any longer term trends.

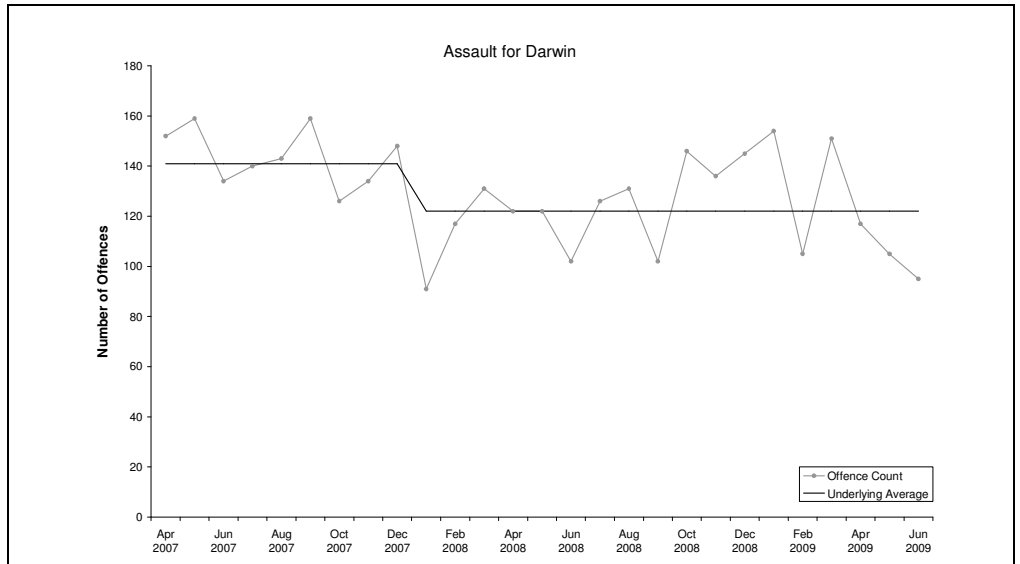
The underlying average smooths out volatility and identifies major changes in the level of crime.

ASSAULT

Underlying average – The underlying average level of *assault* has ranged between 122 and 141 offences per month during the past nine quarters. Its current level of **122 per month** is at the lower end of the range.

Trend – Over the past 12 months no trend was identified.

Quarterly comparisons – There were 317 *assault* offences recorded in the current quarter, a **decrease of 23% (93)** from the previous quarter and a decrease of 8% (29) from the same quarter the previous year.

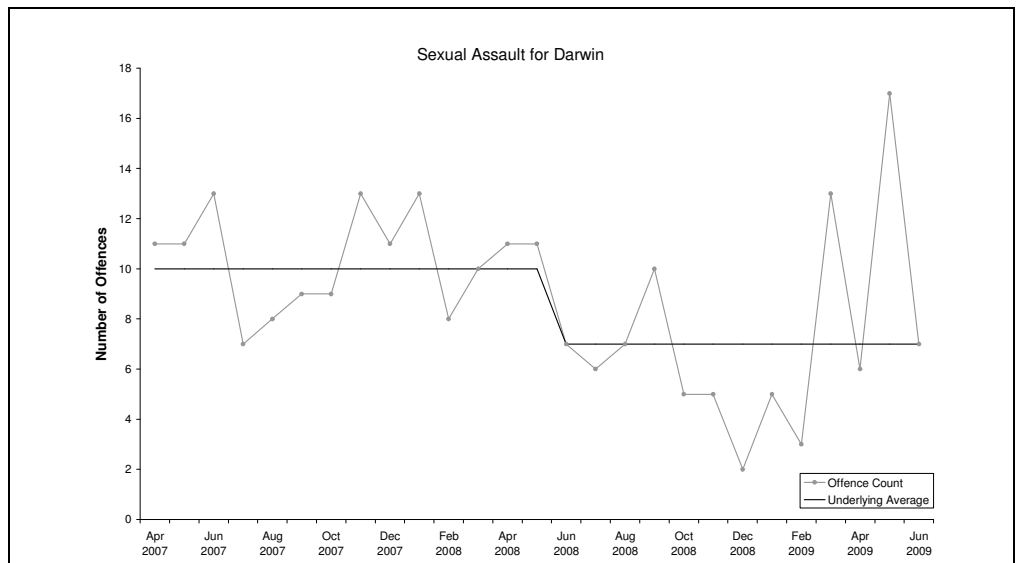


SEXUAL ASSAULT

Underlying average – The underlying average level of *sexual assault* ranged between 7 and 10 offences per month during the past nine quarters. Its current level of **7 per month** is at the lower end of the range.

Trend – Over the past 12 months no trend was identified.

Quarterly comparisons – There were 30 *sexual assault* offences recorded in the current quarter, an **increase of 43% (9)** from the previous quarter and an increase of 3% (1) from the same quarter the previous year.



* Source: The Northern Territory Quarterly Crime & Justice Statistics, Issue 28: June Quarter 2009



Recorded Crime June Quarter 2009

Darwin – key findings*

Explanatory Notes

Largely as a result of its small population, statistics in the Northern Territory can be highly volatile with large swings from one period to the next.

Consequently recorded crime statistics are presented over an extended period to present the current period's data within the context of any longer term trends.

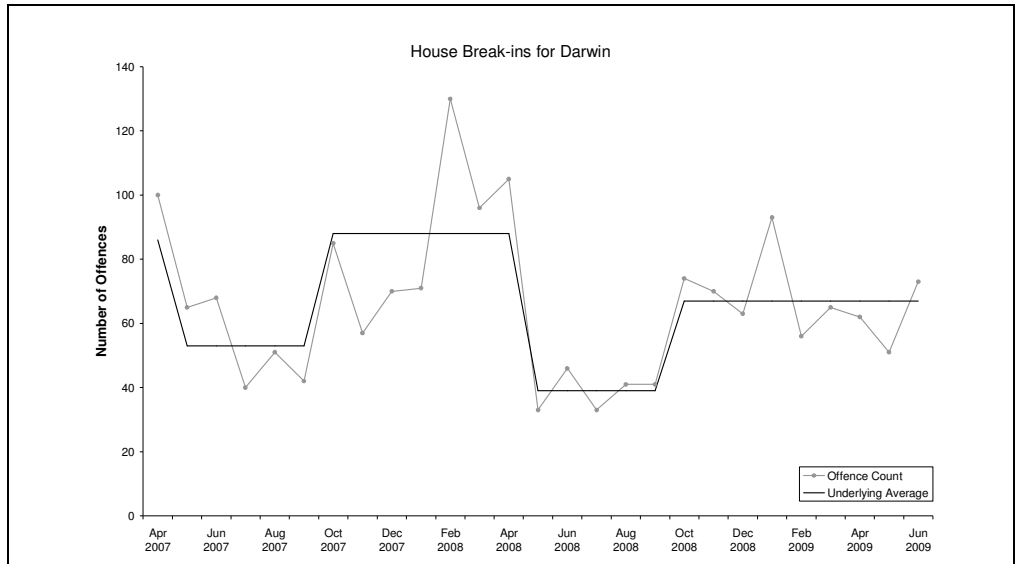
The underlying average smooths out volatility and identifies major changes in the level of crime.

HOUSE BREAK-INS

Underlying average – The underlying average level of *house break-ins* has ranged between 39 and 88 offences per month during the past nine quarters. Its current level of **67 per month** is in the middle of the range.

Trend – Over the past 12 months no trend was identified.

Quarterly comparisons – There were 186 *house break-in* offences recorded in the current quarter, a **decrease of 13% (28)** from the previous quarter, but an increase of 1% (2) from the same quarter the previous year.

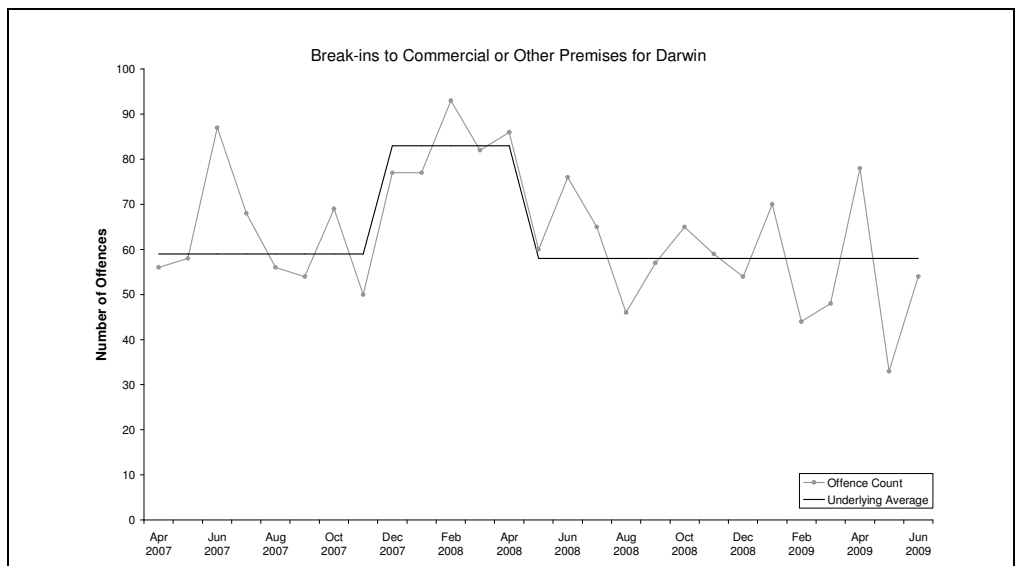


BREAK-INS TO COMMERCIAL OR OTHER PREMISES

Underlying average – The underlying average level of *break-ins to commercial or other premises* has ranged between 58 and 83 offences per month during the past nine quarters. Its current level of **58 per month** is at the lower end of the range.

Trend – Over the past 12 months no trend was identified.

Quarterly comparisons – There were 165 *break-ins to commercial or other premises* offences recorded in the current quarter, an **increase of 2% (3)** from the previous quarter, but a decrease of 26% (57) from the same quarter the previous year.



* Source: The Northern Territory Quarterly Crime & Justice Statistics, Issue 28: June Quarter 2009

Recorded Crime June Quarter 2009

Darwin – key findings*

Explanatory Notes

Largely as a result of its small population, statistics in the Northern Territory can be highly volatile with large swings from one period to the next.

Consequently recorded crime statistics are presented over an extended period to present the current period's data within the context of any longer term trends.

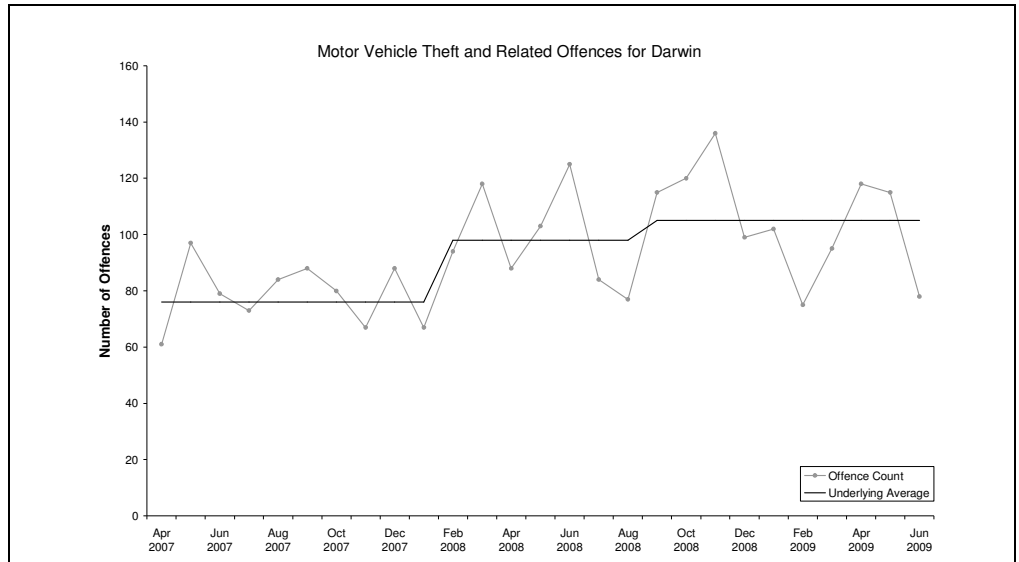
The underlying average smooths out volatility and identifies major changes in the level of crime.

MOTOR VEHICLE THEFT AND RELATED OFFENCES

Underlying average – The underlying average level of motor vehicle theft and related offences has ranged between 76 and 105 offences per month during the past nine quarters. Its current level of **105 per month** is at the higher end of the range.

Trend – Over the past 12 months no trend was identified.

Quarterly comparisons – There were 311 motor vehicle theft and related offences recorded in the current quarter, an **increase of 14% (39)** from the previous quarter, but a decrease of 2% (5) from the same quarter the previous year.



* Source: The Northern Territory Quarterly Crime & Justice Statistics, Issue 28: June Quarter 2009



Recorded Crime June Quarter 2009

Darwin – key findings*

Explanatory Notes

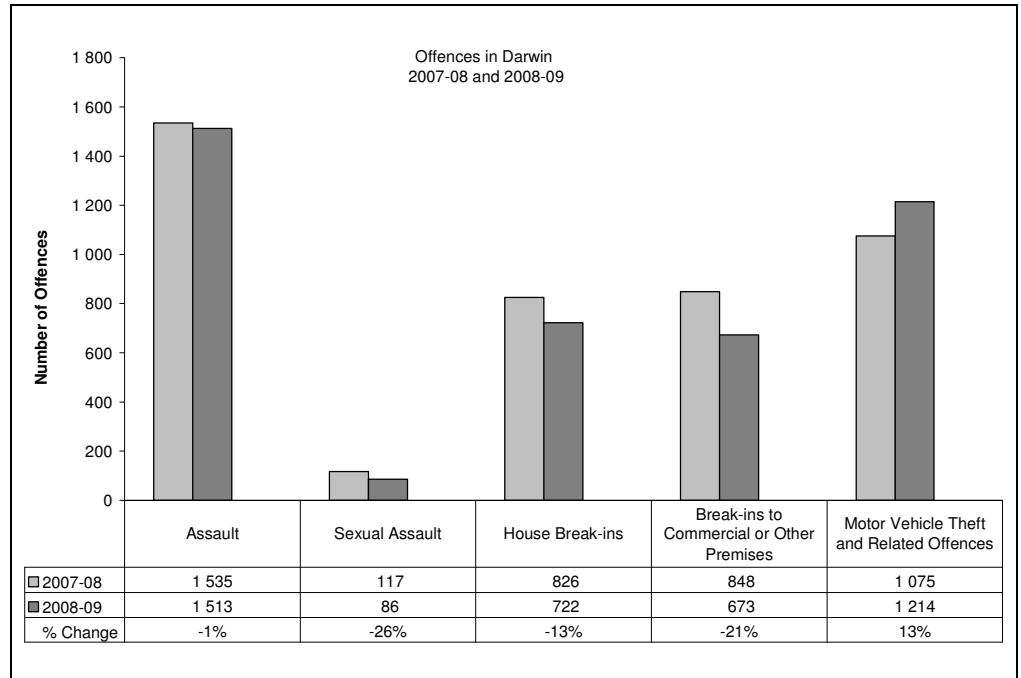
Largely as a result of its small population, statistics in the Northern Territory can be highly volatile with large swings from one period to the next.

Consequently recorded crime statistics are presented over an extended period to present the current period's data within the context of any longer term trends.

The underlying average smooths out volatility and identifies major changes in the level of crime.

TWELVE-MONTH COMPARISON

Twelve-month figures provide comparable information on how crime has tracked from one 12 month period to the next.



Assault

During 2008-09, a total of 1513 *assault* offences were recorded, **1% (22) less** than in 2007-08.

Sexual Assault

During 2008-09, a total of 86 *sexual assault* offences were recorded, **26% (31) less** than in 2007-08.

House Break-ins

During 2008-09, a total of 722 *house break-ins* were recorded, **13% (104) less** than in 2007-08.

Break-ins to Commercial or Other Premises

During 2008-09, a total of 673 *break-ins to commercial or other premises* were recorded, **21% (175) less** than in 2007-08.

Motor Vehicle Theft and Related Offences

During 2008-09, a total of 1214 *motor vehicle theft and related offences* were recorded, **13% (139) more** than in 2007-08.

* Source: The Northern Territory Quarterly Crime & Justice Statistics, Issue 28: June Quarter 2009



Recorded Crime June Quarter 2009

Darwin – key findings*

Explanatory Notes

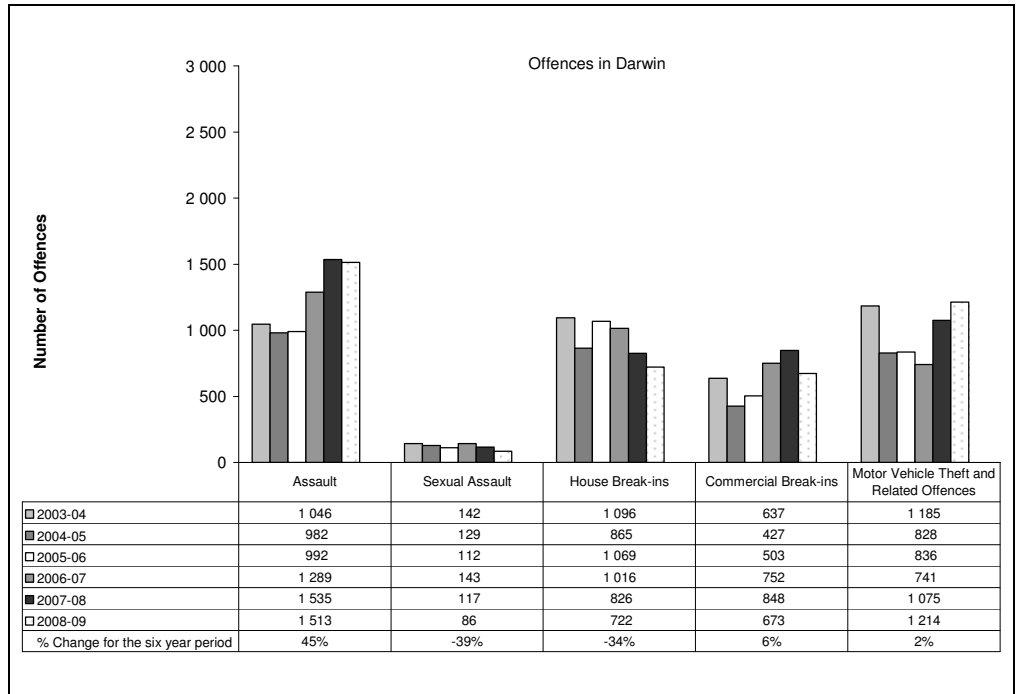
Largely as a result of its small population, statistics in the Northern Territory can be highly volatile with large swings from one period to the next.

Consequently recorded crime statistics are presented over an extended period to present the current period's data within the context of any longer term trends.

The underlying average smooths out volatility and identifies major changes in the level of crime.

SIX YEAR DATA

Data presented over a six year period provides information to see how recorded crimes have tracked in the longer run.



Assault

In late 2004, the Northern Territory Police launched their Violent Crime Reduction Strategy, with a consequential increase in the number of recorded Assault offences in 2005 and subsequent years.

These increases in Assaults largely reflect the impact of operational changes the Police have made in the reporting and recording of domestic violence related Assaults.

During 2008-09, there were 1513 recorded *assault* offences, **45% (467) more** than in 2003-04.

Sexual Assault

During 2008-09, there were 86 recorded *sexual assault* offences, **39% (56) less** than in 2003-04.

House Break-ins

During 2008-09, there were 722 recorded *house break-in* offences, **34% (374) less** than in 2003-04.

Commercial Break-ins

During 2008-09, there were 673 recorded *commercial break-in* offences, **6% (36) more** than in 2003-04.

Motor Vehicle Theft and Related Offences

During 2008-09, there were 1214 recorded *motor vehicle theft and related offences*, **2% (29) more** than in 2003-04.

* Source: The Northern Territory Recorded Crime data extract for June Quarter 2009



Recorded Crime June Quarter 2009

Palmerston – key findings*

Explanatory Notes

Largely as a result of its small population, statistics in the Northern Territory can be highly volatile with large swings from one period to the next.

Consequently recorded crime statistics are presented over an extended period to present the current period's data within the context of any longer term trends.

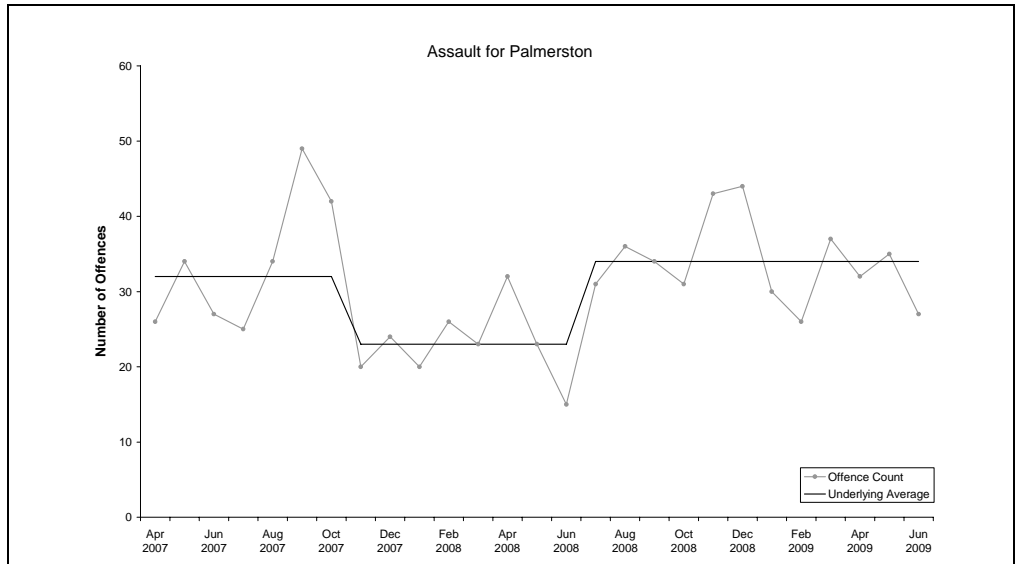
The underlying average smooths out volatility and identifies major changes in the level of crime.

ASSAULT

Underlying average – The underlying average level of *assault* has ranged between 23 and 34 offences per month during the past nine quarters. Its current level of **34 per month** is at the higher end of the range.

Trend – Over the past 12 months no trend was identified.

Quarterly comparisons – There were 94 *assault* offences recorded in the current quarter, an **increase of 1% (1)** from the previous quarter and an increase of 34% (24) from the same quarter the previous year.

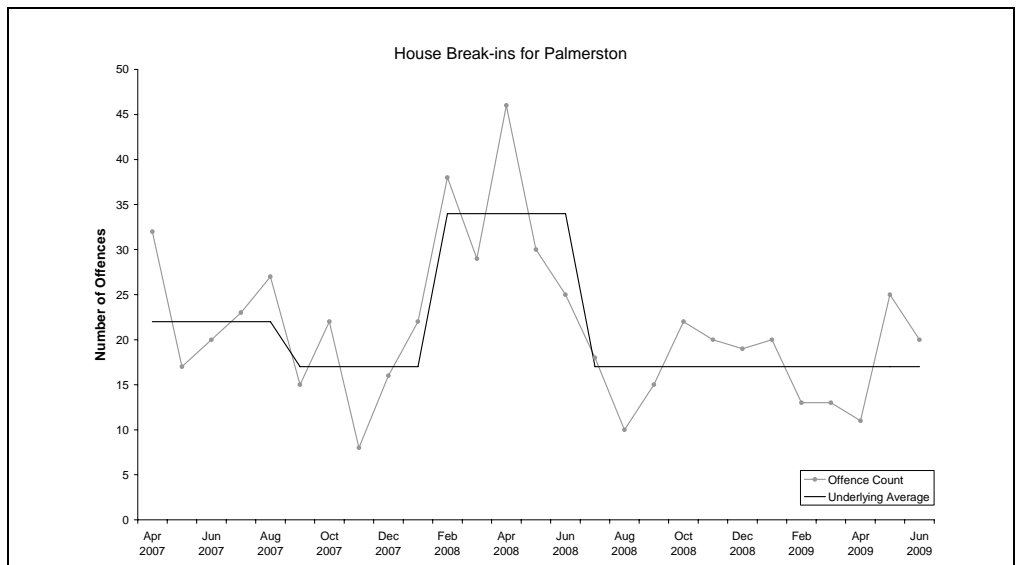


HOUSE BREAK-INS

Underlying average – The underlying average level of *house break-ins* has ranged between 17 and 34 offences per month during the past nine quarters. Its current level of **17 per month** is at the lower end of the range.

Trend – Over the past 12 months no trend was identified.

Quarterly comparisons – There were 56 *house break-in* offences recorded in the current quarter, an **increase of 22% (10)** from the previous quarter, but a decrease of 45% (45) from the same quarter the previous year.



* Source: The Northern Territory Quarterly Crime & Justice Statistics, Issue 28: June Quarter 2009



Recorded Crime June Quarter 2009

Palmerston – key findings*

Explanatory Notes

Largely as a result of its small population, statistics in the Northern Territory can be highly volatile with large swings from one period to the next.

Consequently recorded crime statistics are presented over an extended period to present the current period's data within the context of any longer term trends.

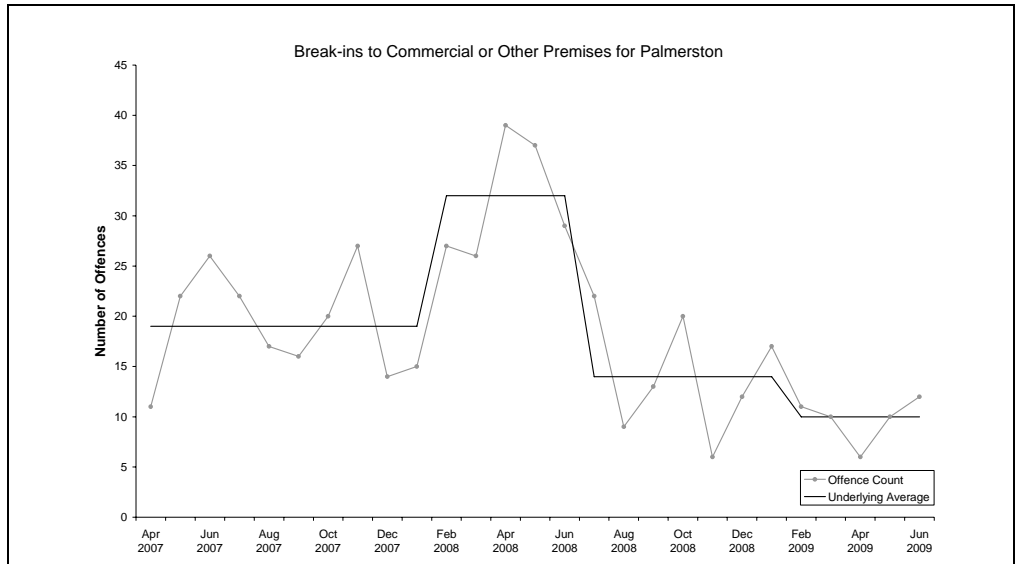
The underlying average smooths out volatility and identifies major changes in the level of crime.

BREAK-INS TO COMMERCIAL OR OTHER PREMISES

Underlying average – The underlying average level of *break-ins to commercial or other premises* has ranged between 10 and 32 offences per month during the past nine quarters. Its current level of **10 per month** is at the lower end of the range.

Trend – Over the past 12 months no trend was identified.

Quarterly comparisons – There were 28 *break-ins to commercial or other premises* offences recorded in the current quarter, a **decrease of 26% (10)** from the previous quarter and a decrease of 73% (77) from the same quarter the previous year.

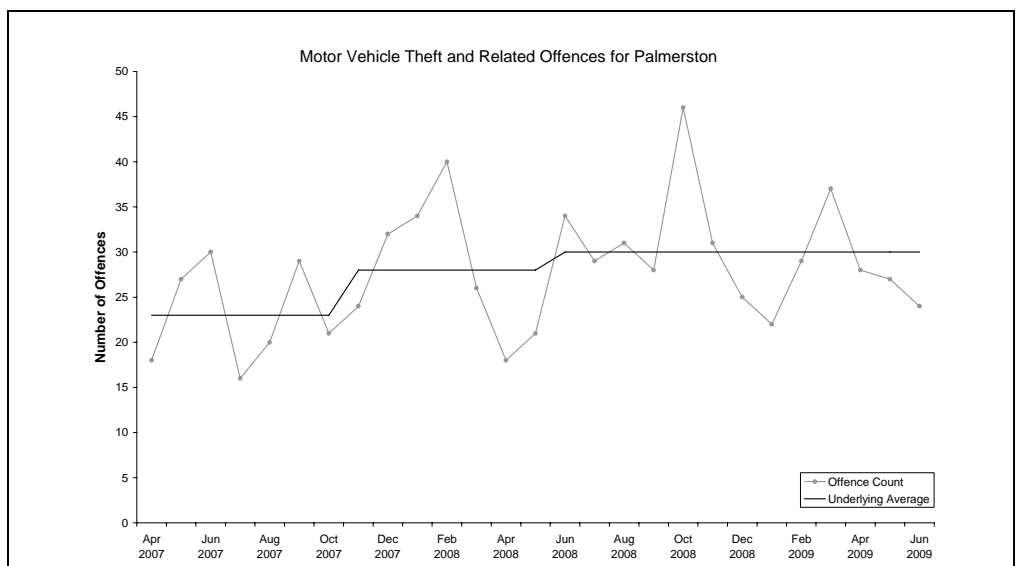


MOTOR VEHICLE THEFT AND RELATED OFFENCES

Underlying average – The underlying average level of *motor vehicle theft and related offences* has ranged between 23 and 30 offences per month during the past nine quarters. Its current level of **30 per month** is at the higher end of the range.

Trend – Over the past 12 months no trend was identified.

Quarterly comparisons – There were 79 *motor vehicle theft and related offences* recorded in the current quarter, a **decrease of 10% (9)** from the previous quarter, but an increase of 8% (6) from the same quarter the previous year.



* Source: The Northern Territory Quarterly Crime & Justice Statistics, Issue 28: June Quarter 2009



Recorded Crime June Quarter 2009

Palmerston – key findings*

Explanatory Notes

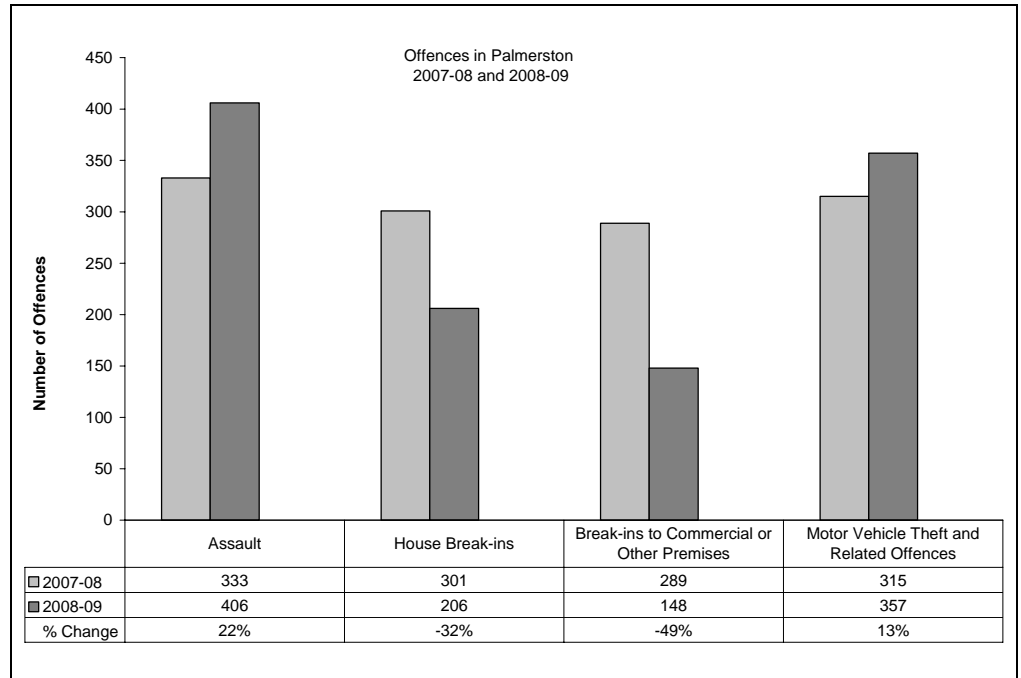
Largely as a result of its small population, statistics in the Northern Territory can be highly volatile with large swings from one period to the next.

Consequently recorded crime statistics are presented over an extended period to present the current period's data within the context of any longer term trends.

The underlying average smooths out volatility and identifies major changes in the level of crime.

TWELVE-MONTH COMPARISON

Twelve-month figures provide comparable information on how crime has tracked from one 12 month period to the next.



Assault

During 2008-09, a total of 406 *assault* offences were recorded, **22% (73) more** than in 2007-08.

House Break-ins

During 2008-09, a total of 206 *house break-ins* were recorded, **32% (95) less** than in 2007-08.

Break-ins to Commercial or Other Premises

During 2008-09, a total of 148 *break-ins to commercial or other premises* were recorded, **49% (141) less** than in 2007-08.

Motor Vehicle Theft and Related Offences

During 2008-09, a total of 357 *motor vehicle theft and related offences* were recorded, **13% (42) more** than in 2007-08.

* Source: The Northern Territory Quarterly Crime & Justice Statistics, Issue 28: June Quarter 2009



Recorded Crime June Quarter 2009

Palmerston – key findings*

Explanatory Notes

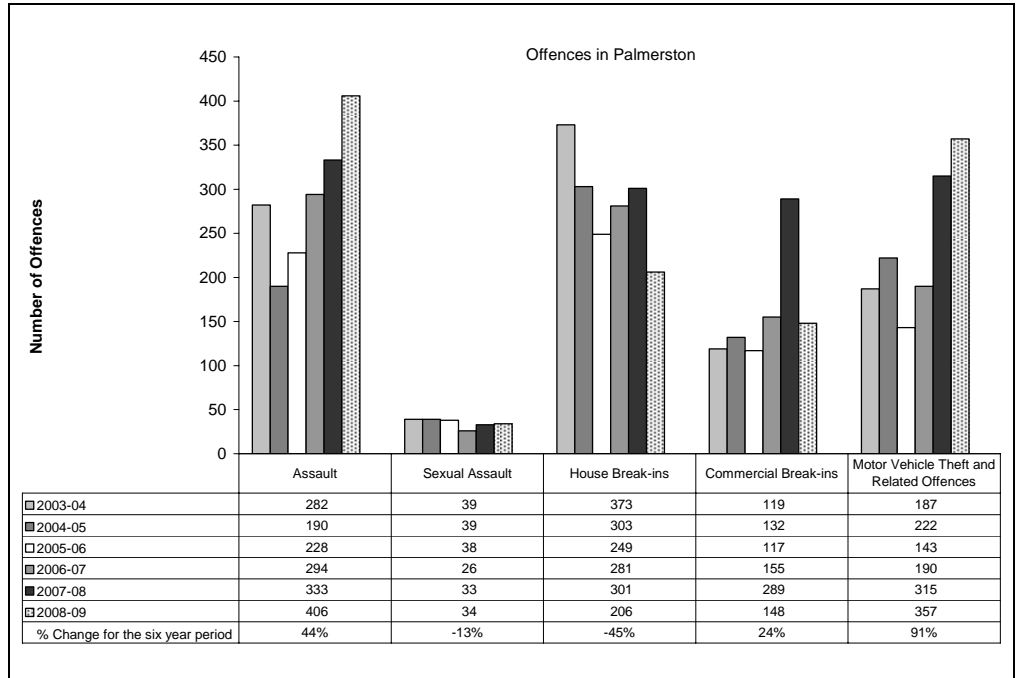
Largely as a result of its small population, statistics in the Northern Territory can be highly volatile with large swings from one period to the next.

Consequently recorded crime statistics are presented over an extended period to present the current period's data within the context of any longer term trends.

The underlying average smooths out volatility and identifies major changes in the level of crime.

SIX YEAR DATA

Data presented over a six year period provides information to see how recorded crimes have tracked in the longer run.



Assault

In late 2004, the Northern Territory Police launched their Violent Crime Reduction Strategy, with a consequential increase in the number of recorded Assault offences in 2005 and subsequent years.

These increases in Assaults largely reflect the impact of operational changes the Police have made in the reporting and recording of domestic violence related Assaults.

During 2008-09, there were 406 recorded *assault* offences, **44% (124) more** than in 2003-04.

Sexual Assault

During 2008-09, there were 34 recorded *sexual assault* offences, **13% (5) less** than in 2003-04.

House Break-ins

During 2008-09, there were 206 recorded *house break-in* offences, **45% (167) less** than in 2003-04.

Commercial Break-ins

During 2008-09, there were 148 recorded *commercial break-in* offences, **24% (29) more** than in 2003-04.

Motor Vehicle Theft and Related Offences

During 2008-09, there were 357 recorded *motor vehicle theft and related offences*, **91% (170) more** than in 2003-04.

* Source: The Northern Territory Recorded Crime data extract for June Quarter 2009

Recorded Crime June Quarter 2009

Alice Springs – key findings*

Explanatory Notes

Largely as a result of its small population, statistics in the Northern Territory can be highly volatile with large swings from one period to the next.

Consequently recorded crime statistics are presented over an extended period to present the current period's data within the context of any longer term trends.

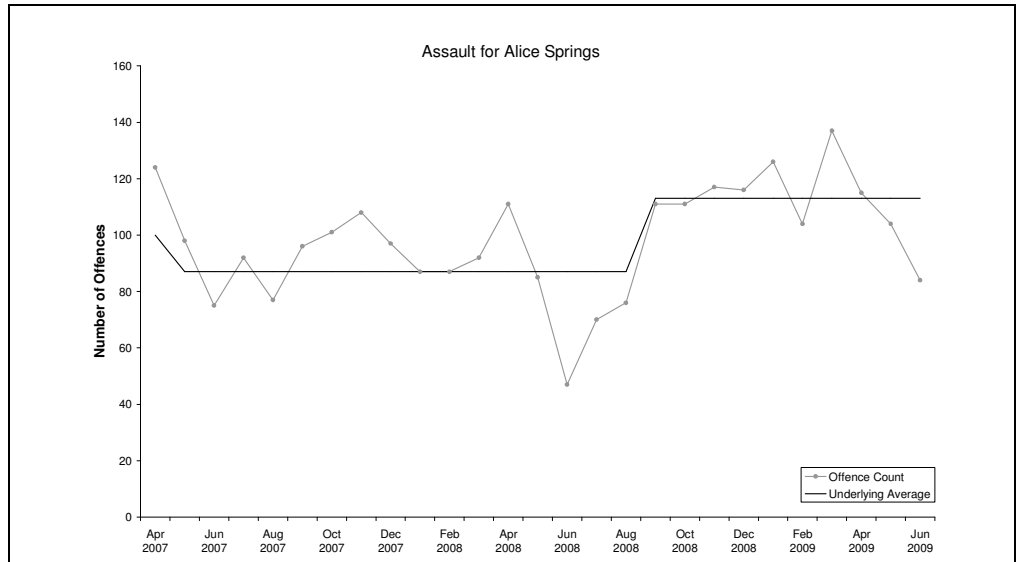
The underlying average smooths out volatility and identifies major changes in the level of crime.

ASSAULT

Underlying average – The underlying average level of *assault* has ranged between 87 and 113 offences per month during the past nine quarters. Its current level of **113 per month** is at the higher end of the range.

Trend – Over the past 12 months no trend was identified.

Quarterly comparisons – There were 303 *assault* offences recorded in the current quarter, a **decrease of 17% (64)** from the previous quarter, but an increase of 25% (60) from the same quarter the previous year.

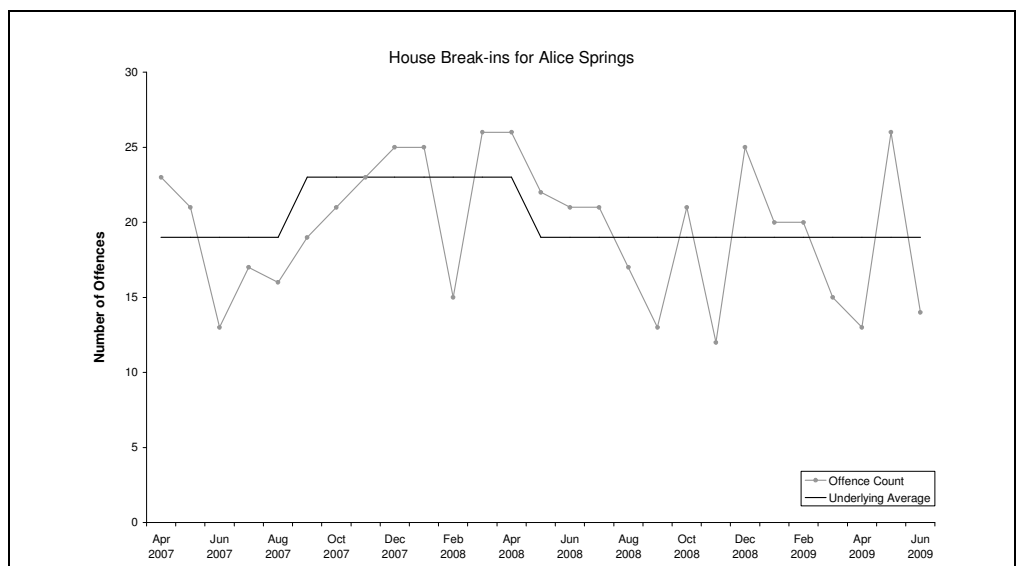


HOUSE BREAK-INS

Underlying average – The underlying average level of *house break-ins* has ranged between 19 and 23 offences per month during the past nine quarters. Its current level of **19 per month** is at the lower end of the range.

Trend – Over the past 12 months no trend was identified.

Quarterly comparisons – There were 53 *house break-in* offences recorded in the current quarter, a **decrease of 4% (2)** from the previous quarter and a decrease of 23% (16) from the same quarter the previous year.



* Source: The Northern Territory Quarterly Crime & Justice Statistics, Issue 28: June Quarter 2009



Recorded Crime June Quarter 2009

Alice Springs – key findings*

Explanatory Notes

Largely as a result of its small population, statistics in the Northern Territory can be highly volatile with large swings from one period to the next.

Consequently recorded crime statistics are presented over an extended period to present the current period's data within the context of any longer term trends.

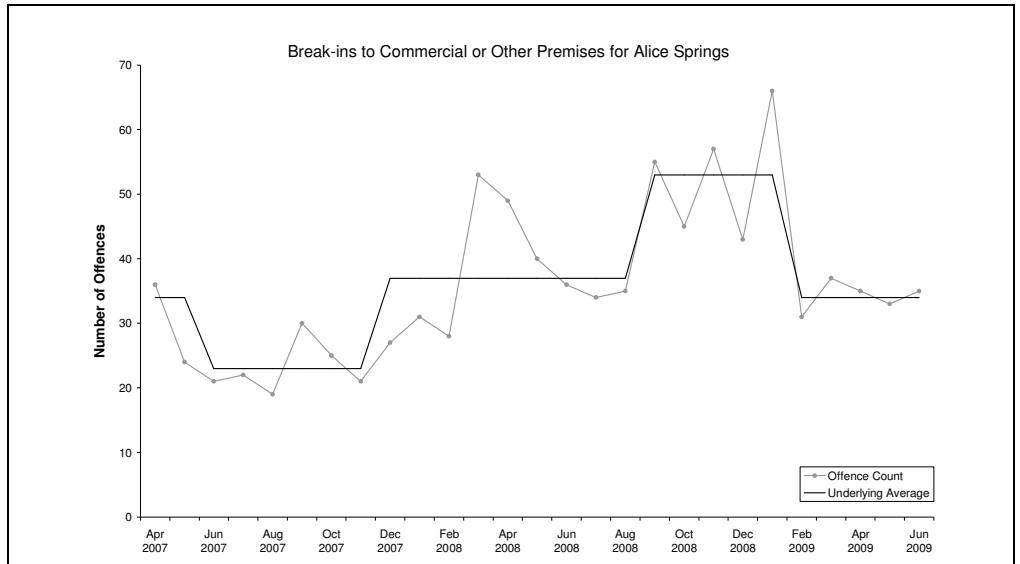
The underlying average smooths out volatility and identifies major changes in the level of crime.

BREAK-INS TO COMMERCIAL OR OTHER PREMISES

Underlying average – The underlying average level of *break-ins to commercial or other premises* has ranged between 23 and 53 offences per month during the past nine quarters. Its current level of **34 per month** is in the middle of the range.

Trend – Over the past 12 months no trend was identified.

Quarterly comparisons – There were 103 *break-ins to commercial or other premises* offences recorded in the current quarter, a **decrease of 23% (31)** from the previous quarter and a decrease of 18% (22) from the same quarter the previous year.

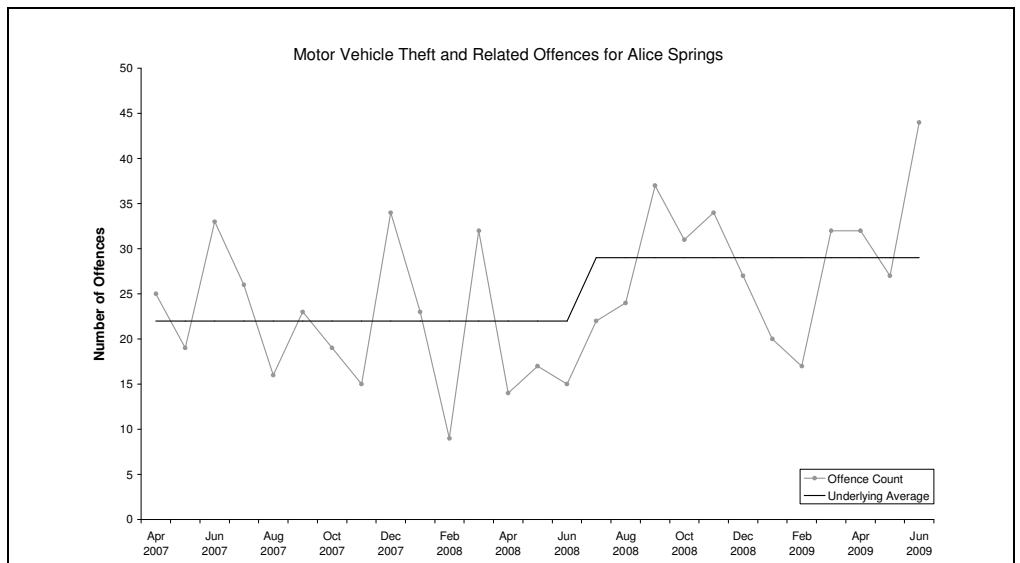


MOTOR VEHICLE THEFT AND RELATED OFFENCES

Underlying average – The underlying average level of *motor vehicle theft and related offences* has ranged between 22 and 29 offences per month during the past nine quarters. Its current level of **29 per month** is at the higher end of the range.

Trend – Over the past 12 months no trend was identified.

Quarterly comparisons – There were 103 *motor vehicle theft and related offences* recorded in the current quarter, an **increase of 49% (34)** from the previous quarter and an increase of 124% (57) from the same quarter the previous year.



* Source: The Northern Territory Quarterly Crime & Justice Statistics, Issue 28: June Quarter 2009



Recorded Crime June Quarter 2009

Alice Springs – key findings*

Explanatory Notes

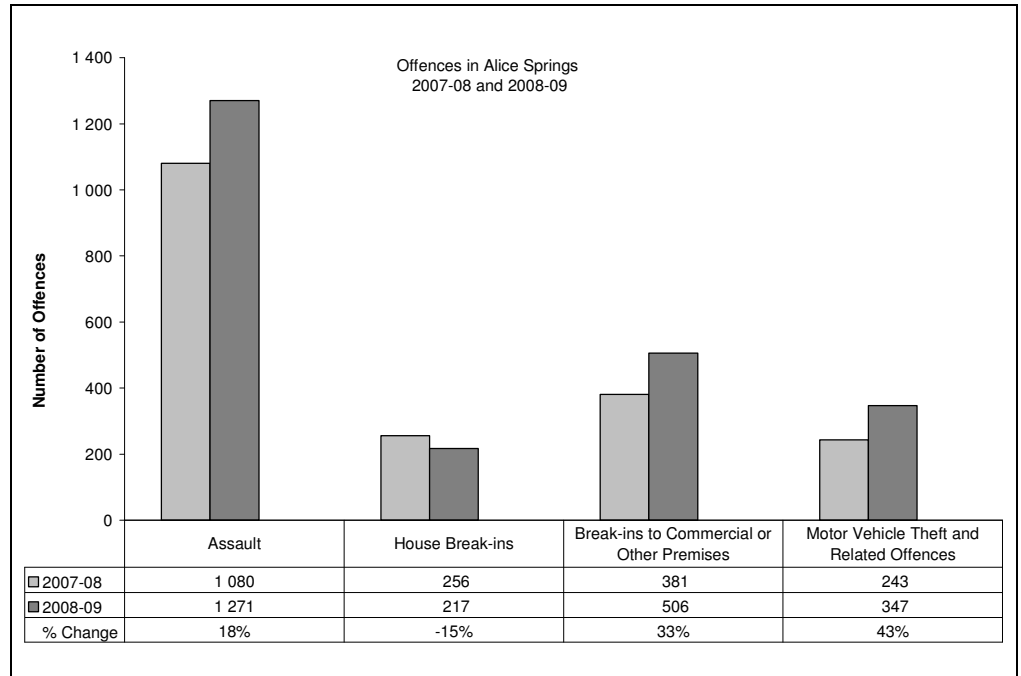
Largely as a result of its small population, statistics in the Northern Territory can be highly volatile with large swings from one period to the next.

Consequently recorded crime statistics are presented over an extended period to present the current period's data within the context of any longer term trends.

The underlying average smooths out volatility and identifies major changes in the level of crime.

TWELVE-MONTH COMPARISON

Twelve-month figures provide comparable information on how crime has tracked from one 12 month period to the next.



Assault

During 2008-09, a total of 1271 *assault* offences were recorded, **18% (191) more** than in 2007-08.

House Break-ins

During 2008-09, a total of 217 *house break-ins* were recorded, **15% (39) less** than in 2007-08.

Break-ins to Commercial or Other Premises

During 2008-09, a total of 506 *break-ins to commercial or other premises* were recorded, **33% (125) more** than in 2007-08.

Motor Vehicle Theft and Related Offences

During 2008-09, a total of 347 *motor vehicle theft and related offences* were recorded, **43% (104) more** than in 2007-08.

* Source: The Northern Territory Quarterly Crime & Justice Statistics, Issue 28: June Quarter 2009



Recorded Crime June Quarter 2009

Alice Springs – key findings*

Explanatory Notes

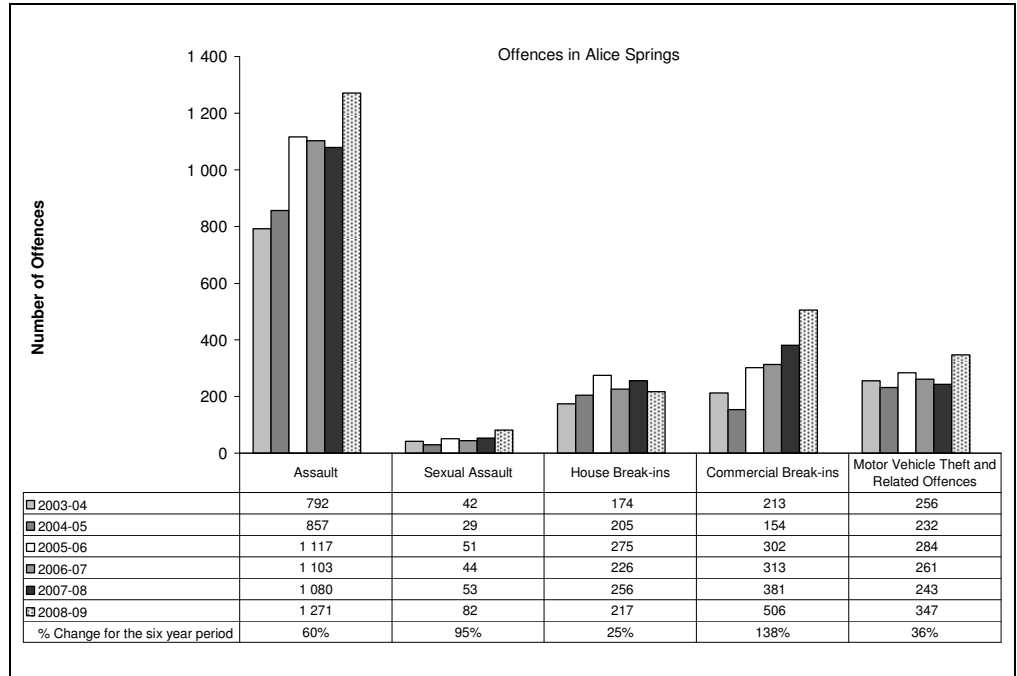
Largely as a result of its small population, statistics in the Northern Territory can be highly volatile with large swings from one period to the next.

Consequently recorded crime statistics are presented over an extended period to present the current period's data within the context of any longer term trends.

The underlying average smooths out volatility and identifies major changes in the level of crime.

SIX YEAR DATA

Data presented over a six year period provides information to see how recorded crimes have tracked in the longer run.



Assault

In late 2004, the Northern Territory Police launched their Violent Crime Reduction Strategy, with a consequential increase in the number of recorded Assault offences in 2005 and subsequent years.

These increases in Assaults largely reflect the impact of operational changes the Police have made in the reporting and recording of domestic violence related Assaults.

During 2008-09, there were 1271 recorded *assault* offences, **60% (479) more** than in 2003-04.

Sexual Assault

During 2008-09, there were 82 recorded *sexual assault* offences, **95% (40) more** than in 2003-04.

House Break-ins

During 2008-09, there were 217 recorded *house break-in* offences, **25% (43) more** than in 2003-04.

Commercial Break-ins

During 2008-09, there were 506 recorded *commercial break-in* offences, **138% (293) more** than in 2003-04.

Motor Vehicle Theft and Related Offences

During 2008-09, there were 347 recorded *motor vehicle theft and related offences*, **36% (91) more** than in 2003-04.

* Source: The Northern Territory Recorded Crime data extract for June Quarter 2009



Katherine – key findings*

Explanatory Notes

Largely as a result of its small population, statistics in the Northern Territory can be highly volatile with large swings from one period to the next.

Consequently recorded crime statistics are presented over an extended period to present the current period's data within the context of any longer term trends.

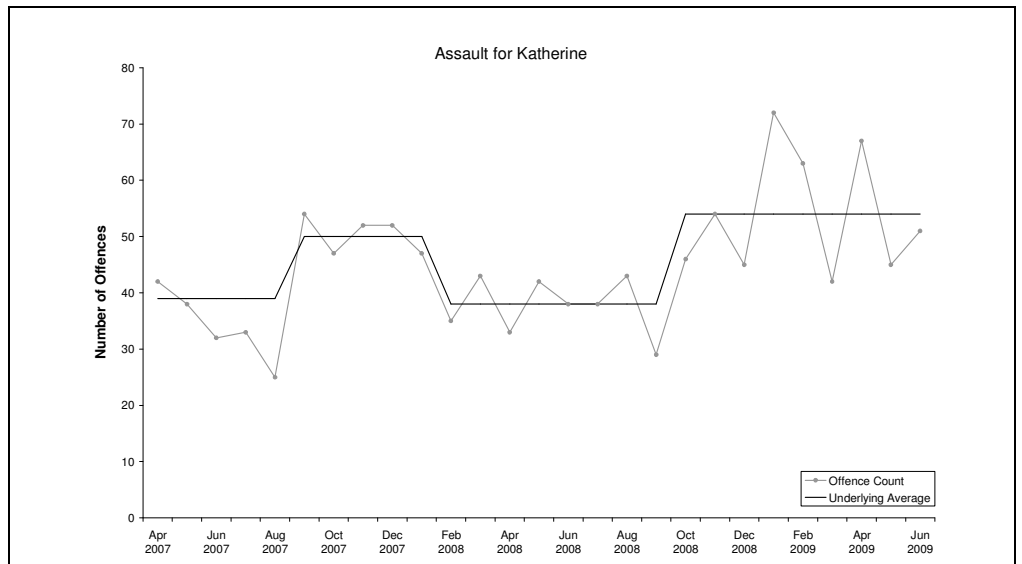
The underlying average smooths out volatility and identifies major changes in the level of crime.

ASSAULT

Underlying average – The underlying average level of *assault* has ranged between 38 and 54 offences per month during the past nine quarters. Its current level of **54 per month** is at the higher end of the range.

Trend – Over the past 12 months no trend was identified.

Quarterly comparisons – There were 163 *assault* offences recorded in the current quarter, a **decrease of 8% (14)** from the previous quarter, but an increase of 44% (50) from the same quarter the previous year.

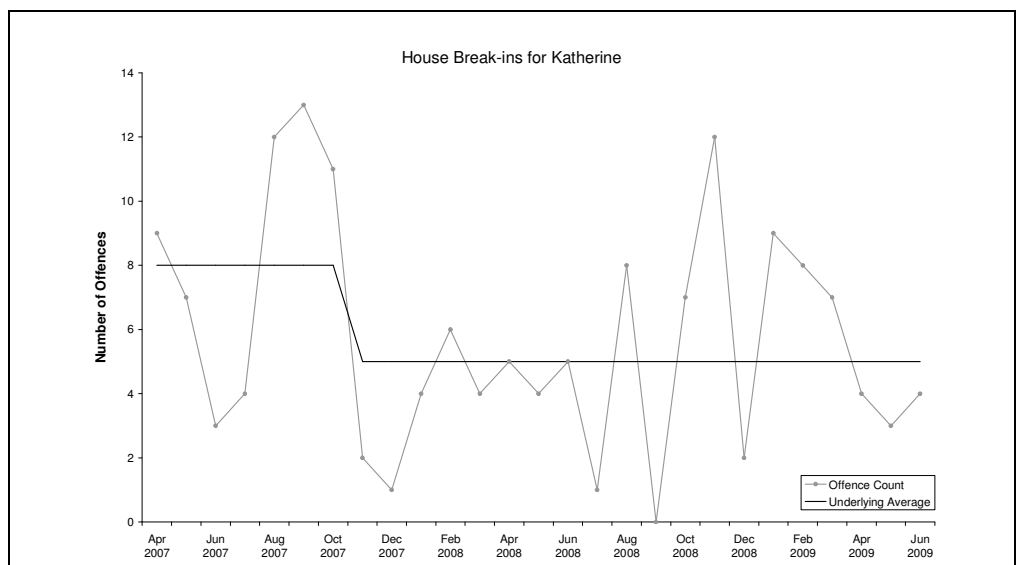


HOUSE BREAK-INS

Underlying average – The underlying average level of *house break-ins* has ranged between 5 and 8 offences per month during the past nine quarters. Its current level of **5 per month** is at the lower end of the range.

Trend – Over the past 12 months no trend was identified.

Quarterly comparisons – There were 11 *house break-in* offences recorded in the current quarter, a **decrease of 54% (13)** from the previous quarter and a decrease of 21% (3) from the same quarter the previous year.



* Source: The Northern Territory Quarterly Crime & Justice Statistics, Issue 28: June Quarter 2009



Katherine – key findings*

Explanatory Notes

Largely as a result of its small population, statistics in the Northern Territory can be highly volatile with large swings from one period to the next.

Consequently recorded crime statistics are presented over an extended period to present the current period's data within the context of any longer term trends.

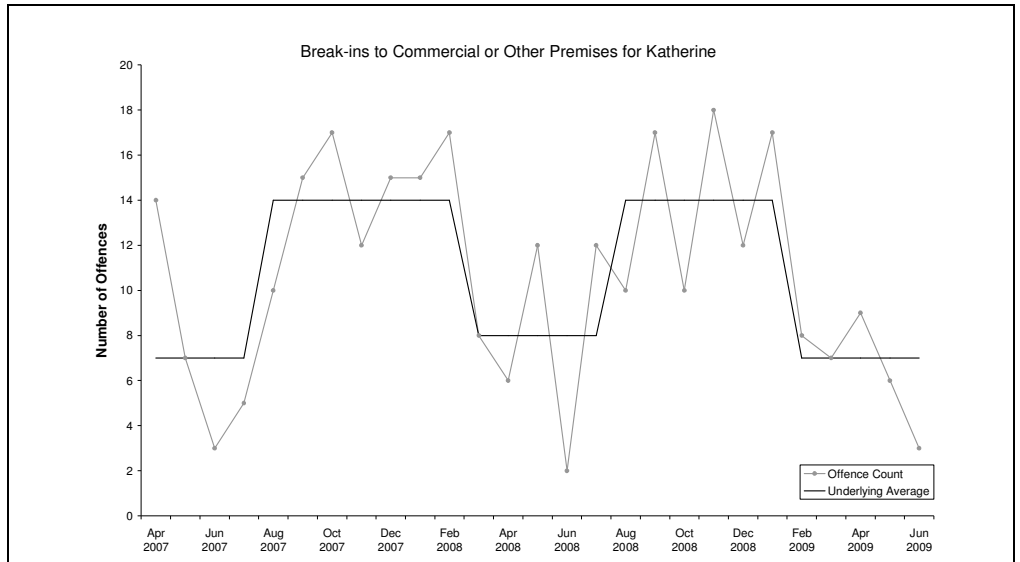
The underlying average smooths out volatility and identifies major changes in the level of crime.

BREAK-INS TO COMMERCIAL OR OTHER PREMISES

Underlying average – The underlying average level of *break-ins to commercial or other premises* has ranged between 7 and 14 offences per month during the past nine quarters. Its current level of **7 per month** is at the lower end of the range.

Trend – Over the past 12 months a downward trend was identified.

Quarterly comparisons – There were 18 *break-ins to commercial or other premises* offences recorded in the current quarter, a **decrease of 44% (14)** from the previous quarter and a decrease of 10% (2) from the same quarter the previous year.

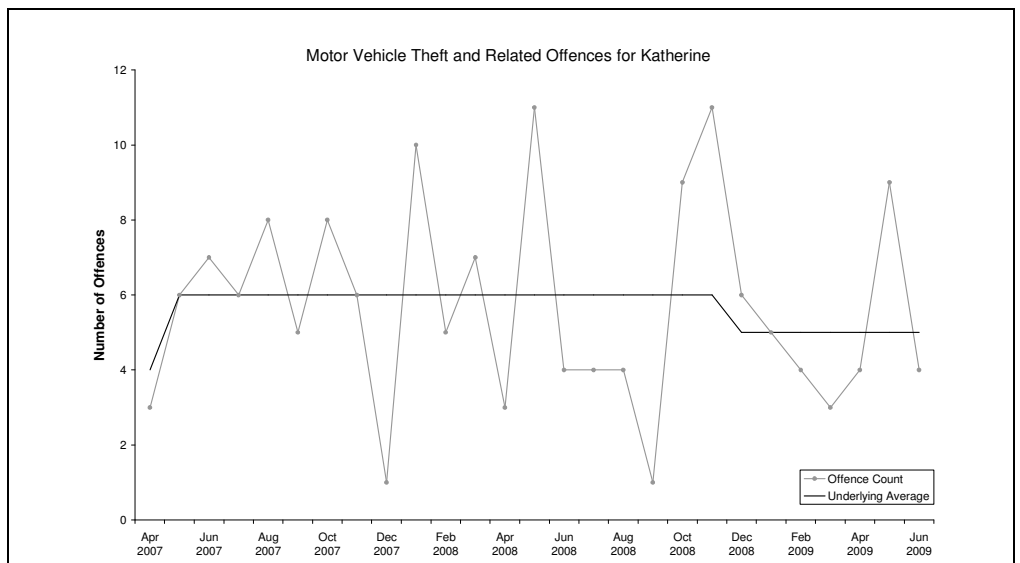


MOTOR VEHICLE THEFT AND RELATED OFFENCES

Underlying average – The underlying average level of *motor vehicle theft and related offences* has ranged between 4 and 6 offences per month during the past nine quarters. Its current level of **5 per month** is in the middle of the range.

Trend – Over the past 12 months no trend was identified.

Quarterly comparisons – There were 17 *motor vehicle theft and related offences* recorded in the current quarter, an **increase of 42% (5)** from the previous quarter, but a decrease of 6% (1) from the same quarter the previous year.



* Source: The Northern Territory Quarterly Crime & Justice Statistics, Issue 28: June Quarter 2009



Recorded Crime June Quarter 2009

Katherine – key findings*

Explanatory Notes

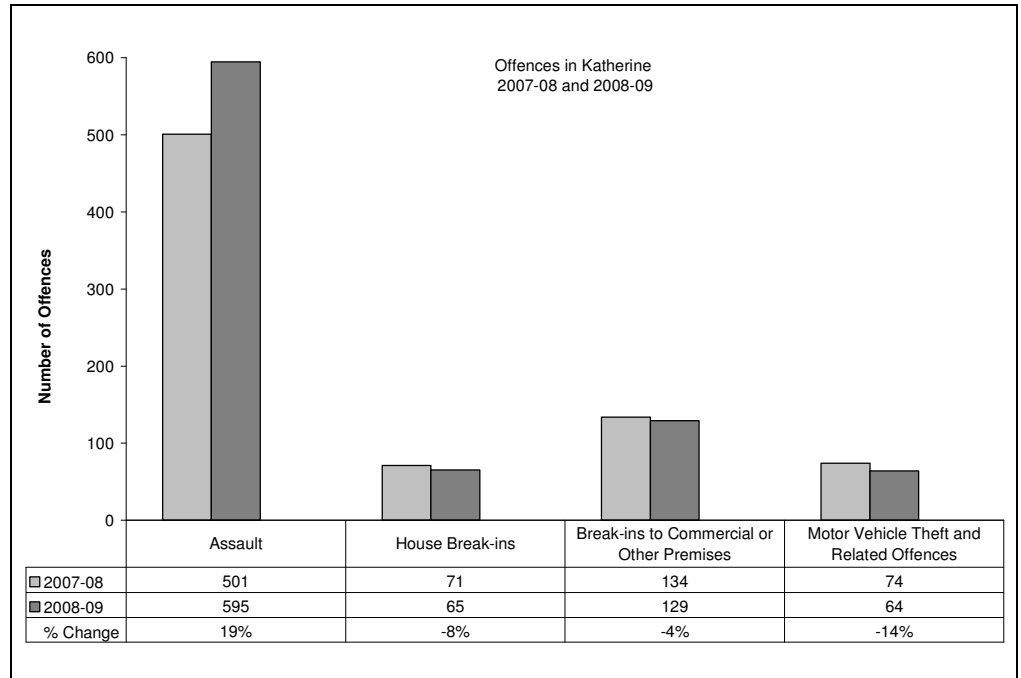
Largely as a result of its small population, statistics in the Northern Territory can be highly volatile with large swings from one period to the next.

Consequently recorded crime statistics are presented over an extended period to present the current period's data within the context of any longer term trends.

The underlying average smooths out volatility and identifies major changes in the level of crime.

TWELVE-MONTH COMPARISON

Twelve-month figures provide comparable information on how crime has tracked from one 12 month period to the next.



Assault

During 2008-09, a total of 595 *assault* offences were recorded, **19% (94) more** than in 2007-08.

House Break-ins

During 2008-09, a total of 65 *house break-ins* were recorded, **8% (6) less** than in 2007-08.

Break-ins to Commercial or Other Premises

During 2008-09, a total of 129 *break-ins to commercial or other premises* were recorded, **4% (5) less** than in 2007-08.

Motor Vehicle Theft and Related Offences

During 2008-09, a total of 64 *motor vehicle theft and related offences* were recorded, **14% (10) less** than in 2007-08.

* Source: The Northern Territory Quarterly Crime & Justice Statistics, Issue 28: June Quarter 2009



Recorded Crime June Quarter 2009

Katherine – key findings*

Explanatory Notes

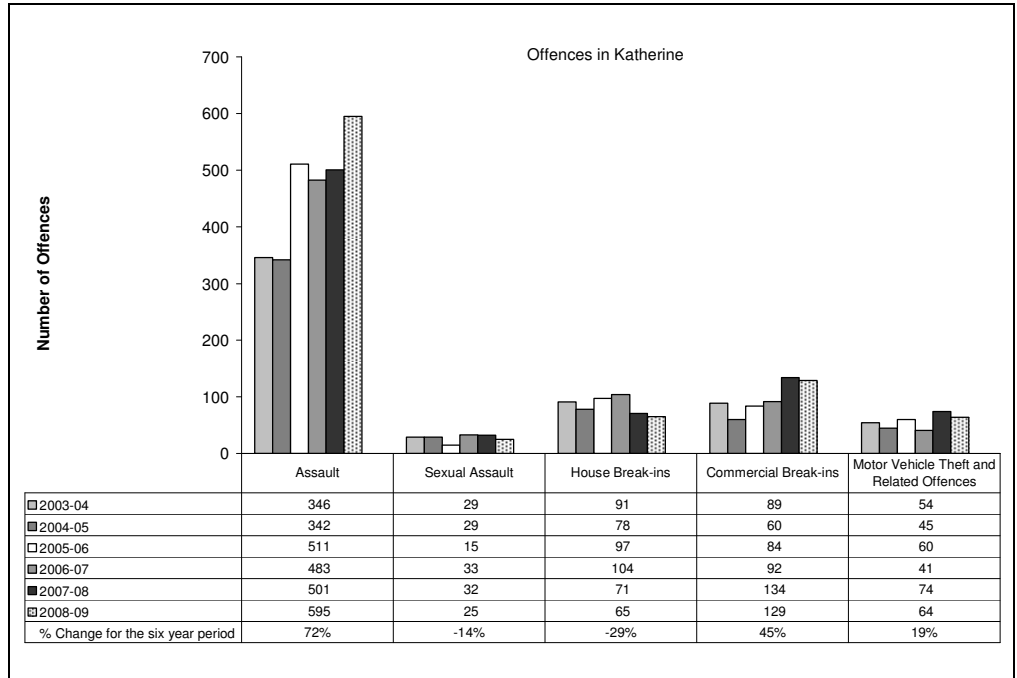
Largely as a result of its small population, statistics in the Northern Territory can be highly volatile with large swings from one period to the next.

Consequently recorded crime statistics are presented over an extended period to present the current period's data within the context of any longer term trends.

The underlying average smooths out volatility and identifies major changes in the level of crime.

SIX YEAR DATA

Data presented over a six year period provides information to see how recorded crimes have tracked in the longer run.



Assault

In late 2004, the Northern Territory Police launched their Violent Crime Reduction Strategy, with a consequential increase in the number of recorded Assault offences in 2005 and subsequent years.

These increases in Assaults largely reflect the impact of operational changes the Police have made in the reporting and recording of domestic violence related Assaults.

During 2008-09, there were 595 recorded *assault* offences, **72% (249) more** than in 2003-04.

Sexual Assault

During 2008-09, there were 25 recorded *sexual assault* offences, **14% (4) less** than in 2003-04.

House Break-ins

During 2008-09, there were 65 recorded *house break-in* offences, **29% (26) less** than in 2003-04.

Commercial Break-ins

During 2008-09, there were 129 recorded *commercial break-in* offences, **45% (40) more** than in 2003-04.

Motor Vehicle Theft and Related Offences

During 2008-09, there were 64 recorded *motor vehicle theft and related offences*, **19% (10) more** than in 2003-04.

* Source: The Northern Territory Recorded Crime data extract for June Quarter 2009



Recorded Crime June Quarter 2009

Tennant Creek – key findings*

Explanatory Notes

Largely as a result of its small population, statistics in the Northern Territory can be highly volatile with large swings from one period to the next.

Consequently recorded crime statistics are presented over an extended period to present the current period's data within the context of any longer term trends.

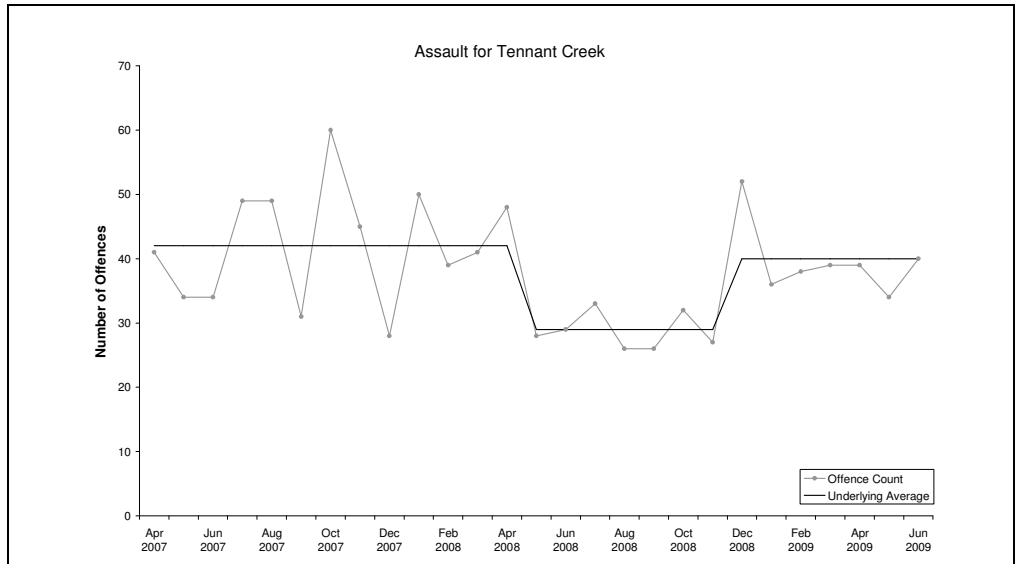
The underlying average smooths out volatility and identifies major changes in the level of crime.

ASSAULT

Underlying average – The underlying average level of *assault* has ranged between 29 and 42 offences per month during the past nine quarters. Its current level of **40 per month** is at the higher end of the range.

Trend – Over the past 12 months an upward trend was identified.

Quarterly comparisons – There were 113 *assault* offences recorded in the current quarter, **no change** from the previous quarter, but an increase of 8% (8) from the same quarter the previous year.

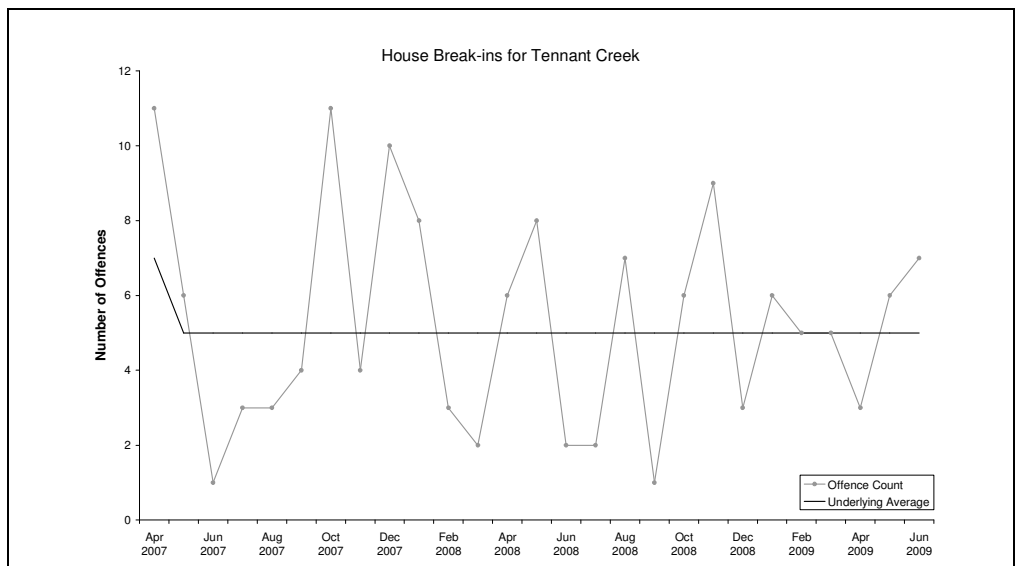


HOUSE BREAK-INS

Underlying average – The underlying average level of *house break-ins* has ranged between 5 and 7 offences per month during the past nine quarters. Its current level of **5 per month** is at the lower end of the range.

Trend – Over the past 12 months no trend was identified.

Quarterly comparisons – There were 16 *house break-in* offences recorded in the current quarter, **no change** from the previous quarter and no change from the same quarter the previous year.



* Source: The Northern Territory Quarterly Crime & Justice Statistics, Issue 28: June Quarter 2009



Recorded Crime June Quarter 2009

Tennant Creek – key findings*

Explanatory Notes

Largely as a result of its small population, statistics in the Northern Territory can be highly volatile with large swings from one period to the next.

Consequently recorded crime statistics are presented over an extended period to present the current period's data within the context of any longer term trends.

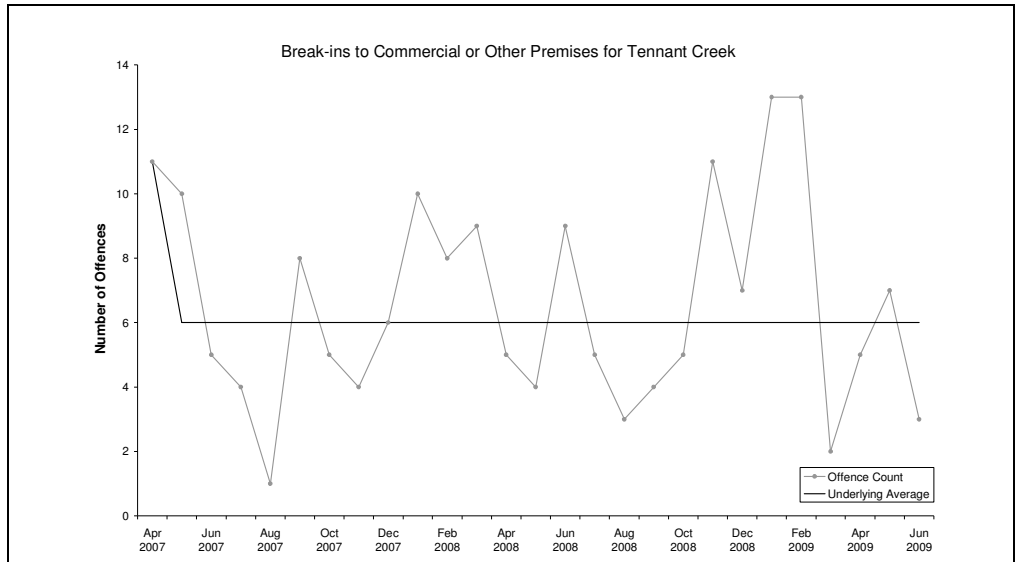
The underlying average smooths out volatility and identifies major changes in the level of crime.

BREAK-INS TO COMMERCIAL OR OTHER PREMISES

Underlying average – The underlying average level of *break-ins to commercial or other premises* has ranged between 6 and 11 offences per month during the past nine quarters. Its current level of **6 per month** is at the lower end of the range.

Trend – Over the past 12 months no trend was identified.

Quarterly comparisons – There were 15 *break-ins to commercial or other premises* offences recorded in the current quarter, a **decrease of 46% (13)** from the previous quarter and a decrease of 17% (3) from the same quarter the previous year.



* Source: The Northern Territory Quarterly Crime & Justice Statistics, Issue 28: June Quarter 2009



Recorded Crime June Quarter 2009

Tennant Creek – key findings*

Explanatory Notes

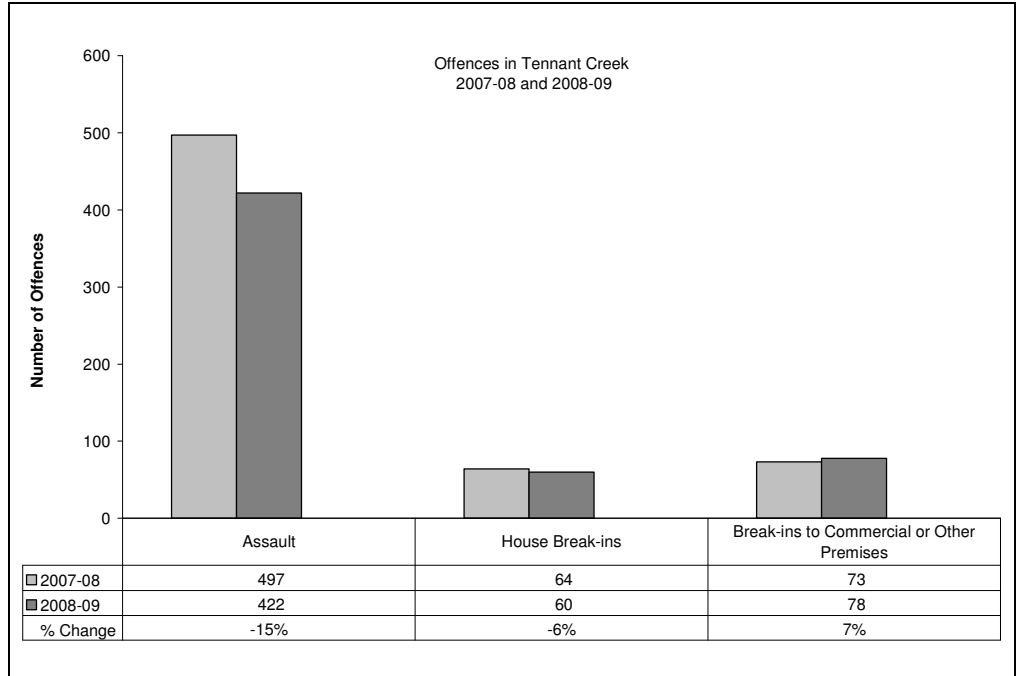
Largely as a result of its small population, statistics in the Northern Territory can be highly volatile with large swings from one period to the next.

Consequently recorded crime statistics are presented over an extended period to present the current period's data within the context of any longer term trends.

The underlying average smooths out volatility and identifies major changes in the level of crime.

TWELVE-MONTH COMPARISON

Twelve-month figures provide comparable information on how crime has tracked from one 12 month period to the next.



Assault

During 2008-09, a total of 422 *assault* offences were recorded, **15% (75) less** than in 2007-08.

House Break-ins

During 2008-09, a total of 60 *house break-ins* were recorded, **6% (4) less** than in 2007-08.

Break-ins to Commercial or Other Premises

During 2008-09, a total of 78 *break-ins to commercial or other premises* were recorded, **7% (5) more** than in 2007-08.

* Source: The Northern Territory Quarterly Crime & Justice Statistics, Issue 28: June Quarter 2009



Recorded Crime June Quarter 2009

Tennant Creek – key findings*

Explanatory Notes

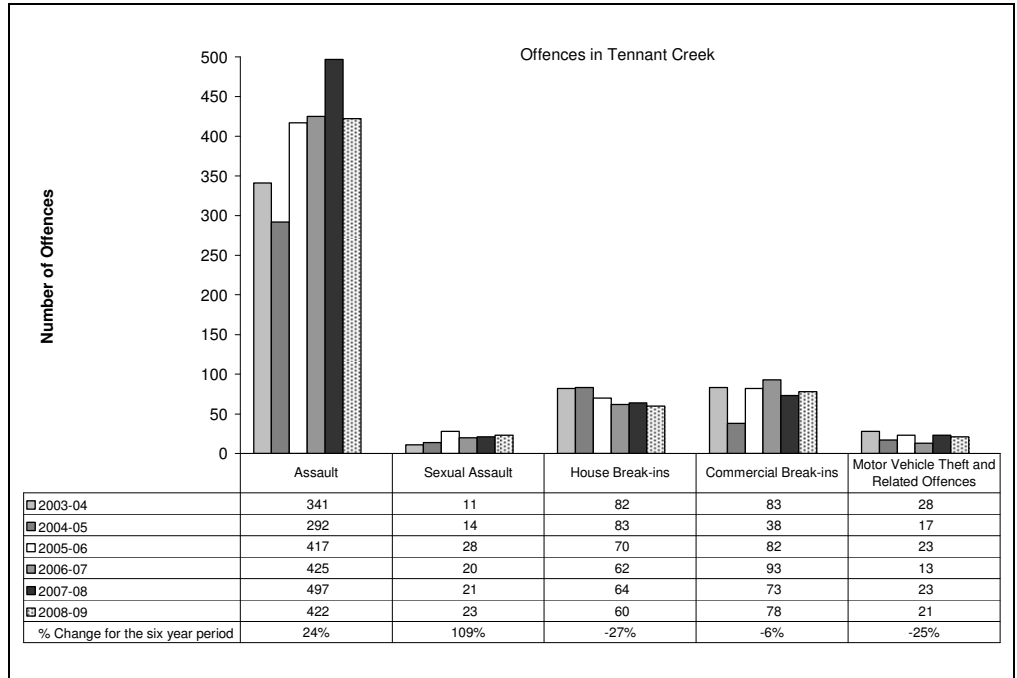
Largely as a result of its small population, statistics in the Northern Territory can be highly volatile with large swings from one period to the next.

Consequently recorded crime statistics are presented over an extended period to present the current period's data within the context of any longer term trends.

The underlying average smooths out volatility and identifies major changes in the level of crime.

SIX YEAR DATA

Data presented over a six year period provides information to see how recorded crimes have tracked in the longer run.



Assault

In late 2004, the Northern Territory Police launched their Violent Crime Reduction Strategy, with a consequential increase in the number of recorded Assault offences in 2005 and subsequent years.

These increases in Assaults largely reflect the impact of operational changes the Police have made in the reporting and recording of domestic violence related Assaults.

During 2008-09, there were 422 recorded *assault* offences, **24% (81) more** than in 2003-04.

Sexual Assault

During 2008-09, there were 23 recorded *sexual assault* offences, **109% (12) more** than in 2003-04.

House Break-ins

During 2008-09, there were 60 recorded *house break-in* offences, **27% (22) less** than in 2003-04.

Commercial Break-ins

During 2008-09, there were 78 recorded *commercial break-in* offences, **6% (5) less** than in 2003-04.

Motor Vehicle Theft and Related Offences

During 2008-09, there were 21 recorded *motor vehicle theft and related offences*, **25% (7) less** than in 2003-04.

* Source: The Northern Territory Recorded Crime data extract for June Quarter 2009



Recorded Crime June Quarter 2009

Nhulunbuy – key findings*

Explanatory Notes

Largely as a result of its small population, statistics in the Northern Territory can be highly volatile with large swings from one period to the next.

Consequently recorded crime statistics are presented over an extended period to present the current period's data within the context of any longer term trends.

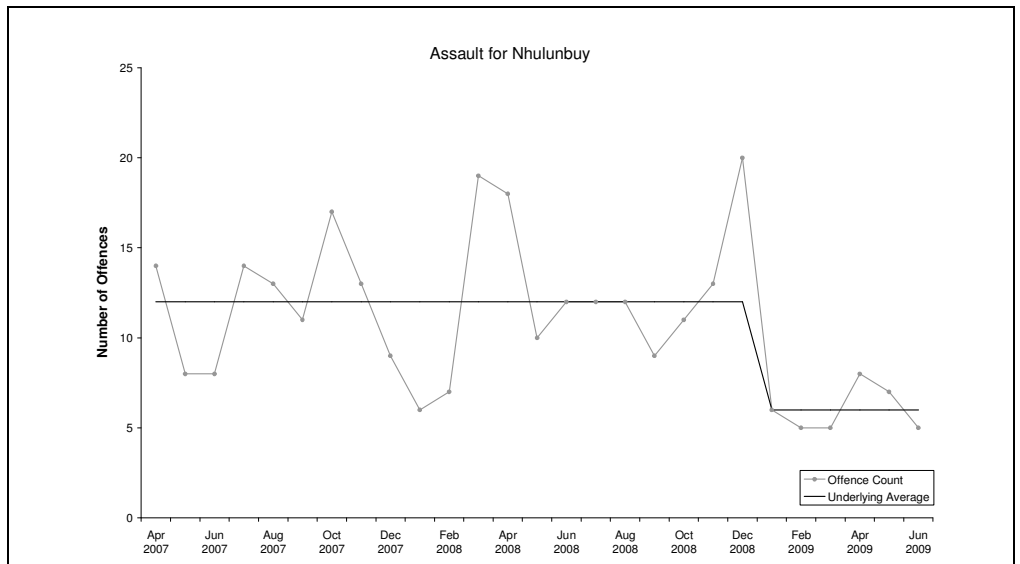
The underlying average smooths out volatility and identifies major changes in the level of crime.

ASSAULT

Underlying average – The underlying average level of *assault* has ranged between 6 and 12 offences per month during the past nine quarters. Its current level of **6 per month** is at the lower end of the range.

Trend – Over the past 12 months a downward trend was identified.

Quarterly comparisons – There were 20 *assault* offences recorded in the current quarter, an **increase of 25% (4)** from the previous quarter, but a decrease of 50% (20) from the same quarter the previous year.

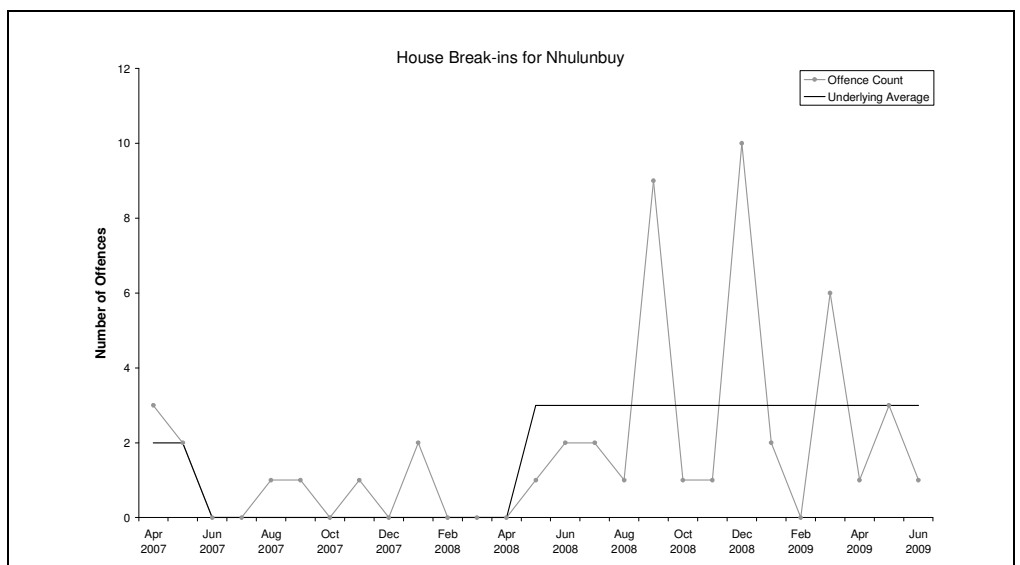


HOUSE BREAK-INS

Underlying average – The underlying average level of *house break-ins* has ranged between 0 and 3 offences per month during the past nine quarters. Its current level of **3 per month** is at the higher end of the range.

Trend – Over the past 12 months no trend was identified.

Quarterly comparisons – There were 5 *house break-in* offences recorded in the current quarter, a **decrease of 3** from the previous quarter, but an increase of 2 from the same quarter the previous year.



* Source: The Northern Territory Quarterly Crime & Justice Statistics, Issue 28: June Quarter 2009



Recorded Crime June Quarter 2009

Nhulunbuy – key findings*

Explanatory Notes

Largely as a result of its small population, statistics in the Northern Territory can be highly volatile with large swings from one period to the next.

Consequently recorded crime statistics are presented over an extended period to present the current period's data within the context of any longer term trends.

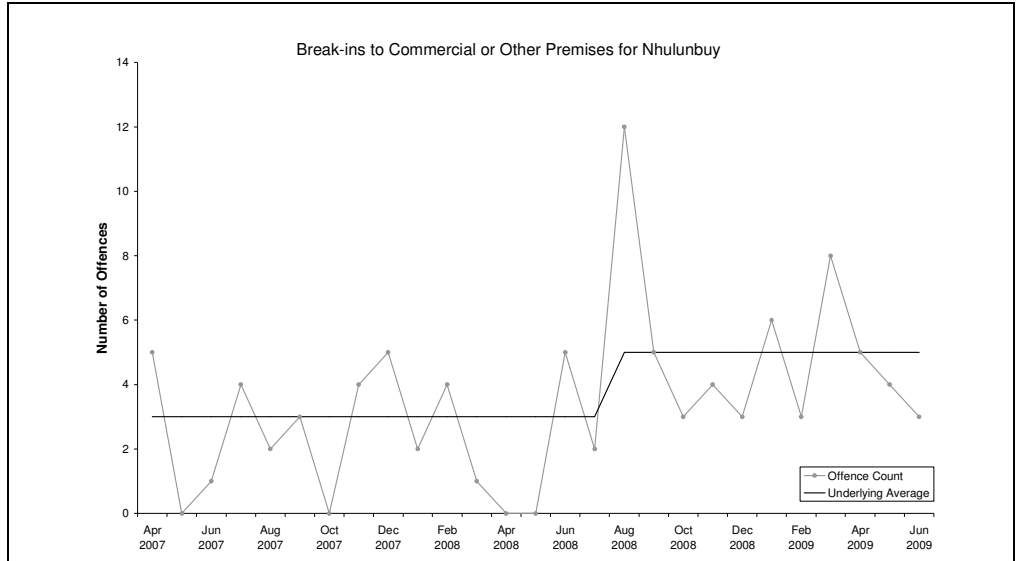
The underlying average smooths out volatility and identifies major changes in the level of crime.

BREAK-INS TO COMMERCIAL OR OTHER PREMISES

Underlying average – The underlying average level of *break-ins to commercial or other premises* has ranged between 3 and 5 offences per month during the past nine quarters. Its current level of **5 per month** is at the higher end of the range.

Trend – Over the past 12 months no trend was identified.

Quarterly comparisons – There were 12 *break-ins to commercial or other premises* offences recorded in the current quarter, a **decrease of 5** from the previous quarter, but an increase of 7 from the same quarter the previous year.



* Source: The Northern Territory Quarterly Crime & Justice Statistics, Issue 28: June Quarter 2009



Recorded Crime June Quarter 2009

Nhulunbuy – key findings*

Explanatory Notes

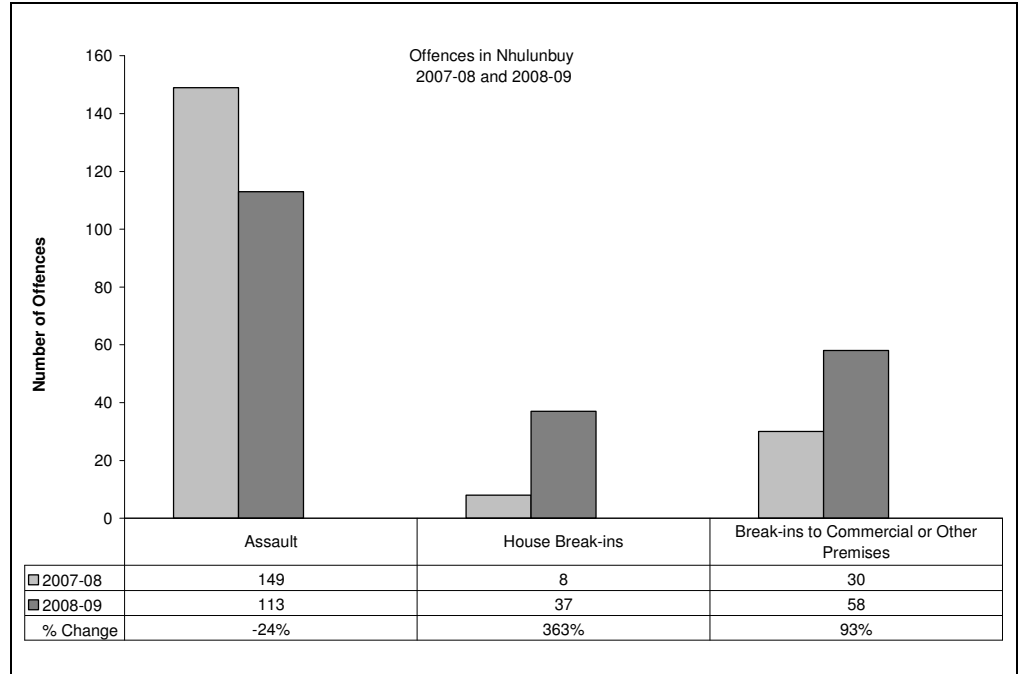
Largely as a result of its small population, statistics in the Northern Territory can be highly volatile with large swings from one period to the next.

Consequently recorded crime statistics are presented over an extended period to present the current period's data within the context of any longer term trends.

The underlying average smooths out volatility and identifies major changes in the level of crime.

TWELVE-MONTH COMPARISON

Twelve-month figures provide comparable information on how crime has tracked from one 12 month period to the next.



Assault

During 2008-09, a total of 113 *assault* offences were recorded, **24% (36) less** than in 2007-08.

House Break-ins

During 2008-09, a total of 37 *house break-ins* were recorded, **363% (29) more** than in 2007-08.

Break-ins to Commercial or Other Premises

During 2008-09, a total of 58 *break-ins to commercial or other premises* were recorded, **93% (28) more** than in 2007-08.

* Source: The Northern Territory Quarterly Crime & Justice Statistics, Issue 28: June Quarter 2009



Recorded Crime June Quarter 2009

Nhulunbuy – key findings*

Explanatory Notes

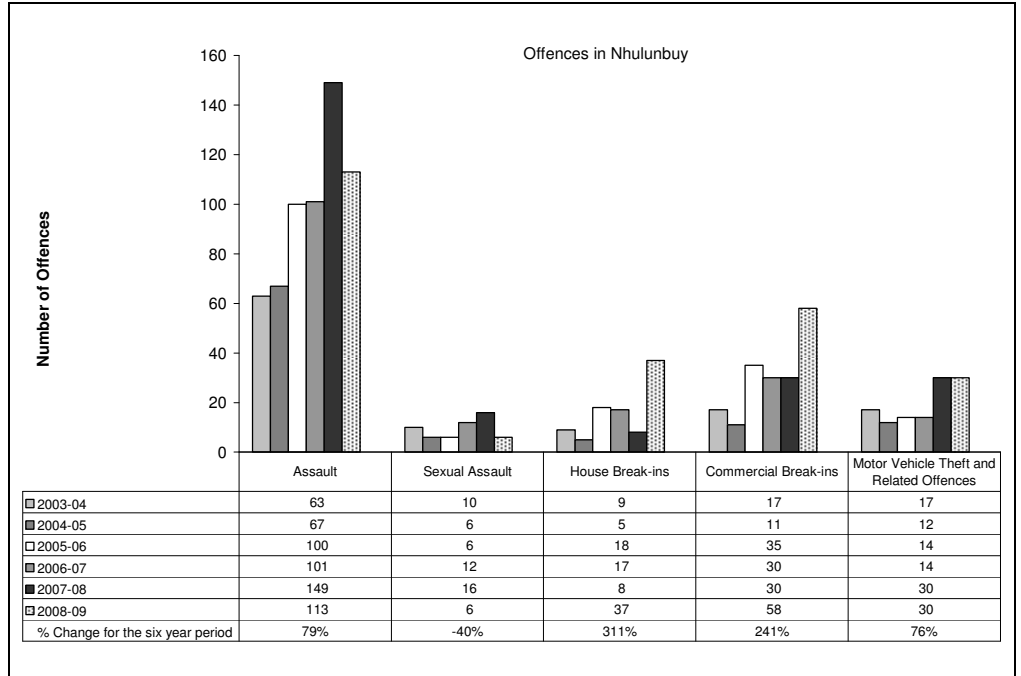
Largely as a result of its small population, statistics in the Northern Territory can be highly volatile with large swings from one period to the next.

Consequently recorded crime statistics are presented over an extended period to present the current period's data within the context of any longer term trends.

The underlying average smooths out volatility and identifies major changes in the level of crime.

SIX YEAR DATA

Data presented over a six year period provides information to see how recorded crimes have tracked in the longer run.



Assault

In late 2004, the Northern Territory Police launched their Violent Crime Reduction Strategy, with a consequential increase in the number of recorded Assault offences in 2005 and subsequent years.

These increases in Assaults largely reflect the impact of operational changes the Police have made in the reporting and recording of domestic violence related Assaults.

During 2008-09, there were 113 recorded *assault* offences, **79% (50) more** than in 2003-04.

Sexual Assault

During 2008-09, there were 6 recorded *sexual assault* offences, **40% (4) less** than in 2003-04.

House Break-ins

During 2008-09, there were 37 recorded *house break-in* offences, **311% (28) more** than in 2003-04.

Commercial Break-ins

During 2008-09, there were 58 recorded *commercial break-in* offences, **241% (41) more** than in 2003-04.

Motor Vehicle Theft and Related Offences

During 2008-09, there were 30 recorded *motor vehicle theft and related offences*, **76% (13) more** than in 2003-04.

* Source: The Northern Territory Recorded Crime data extract for June Quarter 2009



Recorded Crime June Quarter 2009

Northern Territory Balance – key findings*

Explanatory Notes

Largely as a result of its small population, statistics in the Northern Territory can be highly volatile with large swings from one period to the next.

Consequently recorded crime statistics are presented over an extended period to present the current period's data within the context of any longer term trends.

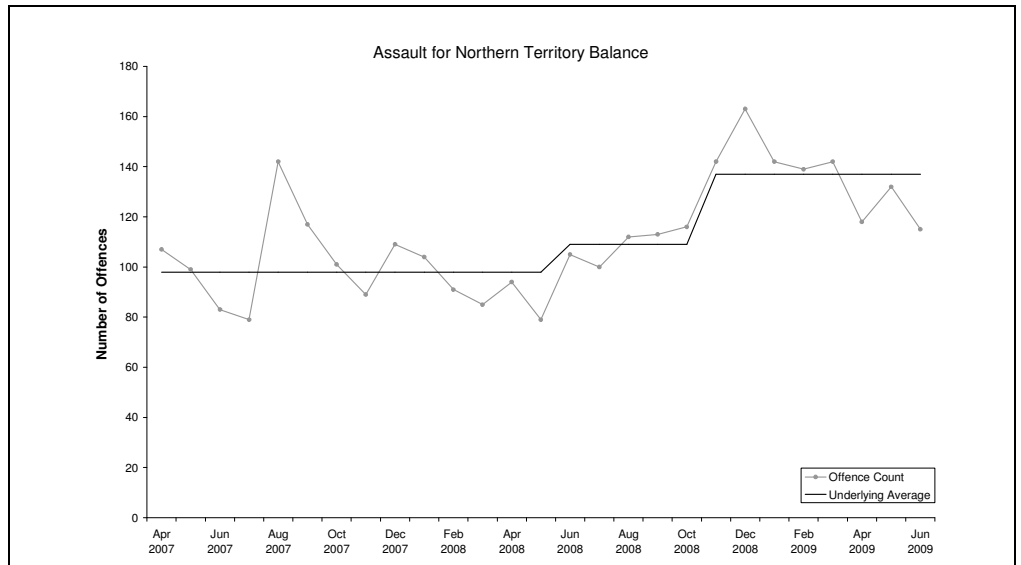
The underlying average smooths out volatility and identifies major changes in the level of crime.

ASSAULT

Underlying average – The underlying average level of *assault* has ranged between 98 and 137 offences per month during the past nine quarters. Its current level of **137 per month** is at the higher end of the range.

Trend – Over the past 12 months no trend was identified.

Quarterly comparisons – There were 365 *assault* offences recorded in the current quarter, a **decrease of 14% (58)** from the previous quarter, but an increase of 31% (87) from the same quarter the previous year.

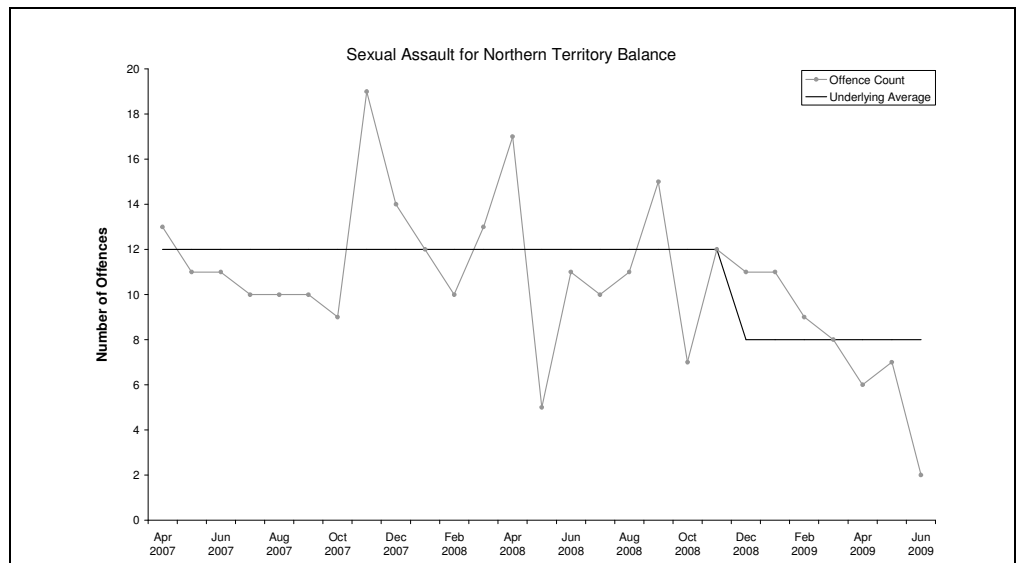


SEXUAL ASSAULT

Underlying average – The underlying average level of *sexual assault* has ranged between 8 and 12 offences per month during the past nine quarters. Its current level of **8 per month** is at the lower end of the range.

Trend – Over the past 12 months a downward trend was identified.

Quarterly comparisons – There were 15 *sexual assault* offences recorded in the current quarter, a **decrease of 46% (13)** from the previous quarter and a decrease of 55% (18) from the same quarter the previous year.



* Source: The Northern Territory Quarterly Crime & Justice Statistics, Issue 28: June Quarter 2009



Recorded Crime June Quarter 2009 Northern Territory Balance – key findings*

Explanatory Notes

Largely as a result of its small population, statistics in the Northern Territory can be highly volatile with large swings from one period to the next.

Consequently recorded crime statistics are presented over an extended period to present the current period's data within the context of any longer term trends.

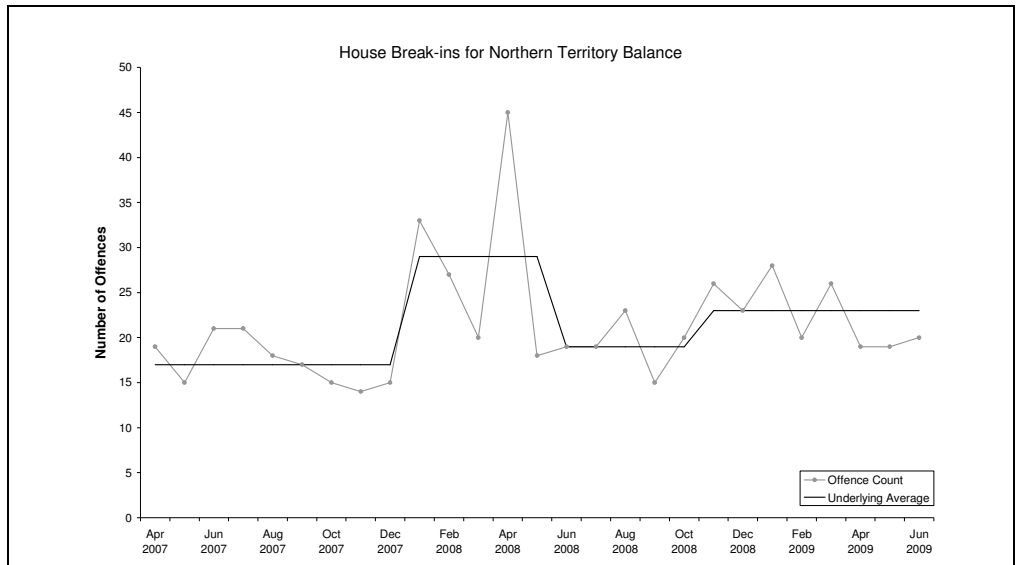
The underlying average smooths out volatility and identifies major changes in the level of crime.

HOUSE BREAK-INS

Underlying average – The underlying average level of *house break-ins* has ranged between 17 and 29 offences per month during the past nine quarters. Its current level of **23 per month** is in the middle of the range.

Trend – Over the past 12 months no trend was identified.

Quarterly comparisons – There were 58 *house break-in* offences recorded in the current quarter, a **decrease of 22% (16)** from the previous quarter and a decrease of 29% (24) from the same quarter the previous year.

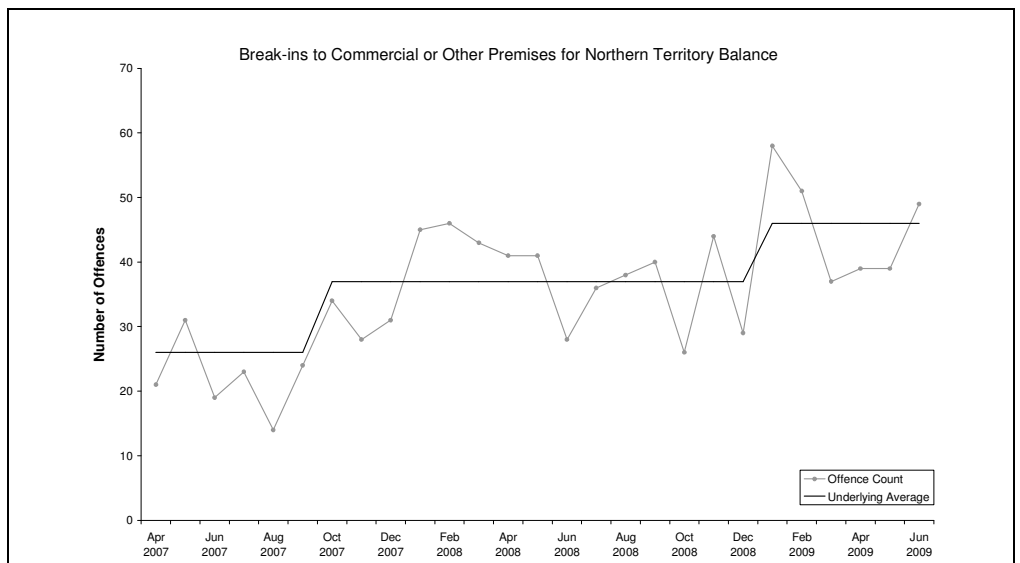


BREAK-INS TO COMMERCIAL OR OTHER PREMISES

Underlying average – The underlying average level of *break-ins to commercial or other premises* has ranged between 26 and 46 offences per month during the past nine quarters. Its current level of **46 per month** is at the higher end of the range.

Trend – Over the past 12 months no trend was identified.

Quarterly comparisons – There were 127 *break-ins to commercial or other premises* offences recorded in the current quarter, a **decrease of 13% (19)** from the previous quarter, but an increase of 15% (17) from the same quarter the previous year.



* Source: The Northern Territory Quarterly Crime & Justice Statistics, Issue 28: June Quarter 2009



Recorded Crime June Quarter 2009

Northern Territory Balance – key findings*

Explanatory Notes

Largely as a result of its small population, statistics in the Northern Territory can be highly volatile with large swings from one period to the next.

Consequently recorded crime statistics are presented over an extended period to present the current period's data within the context of any longer term trends.

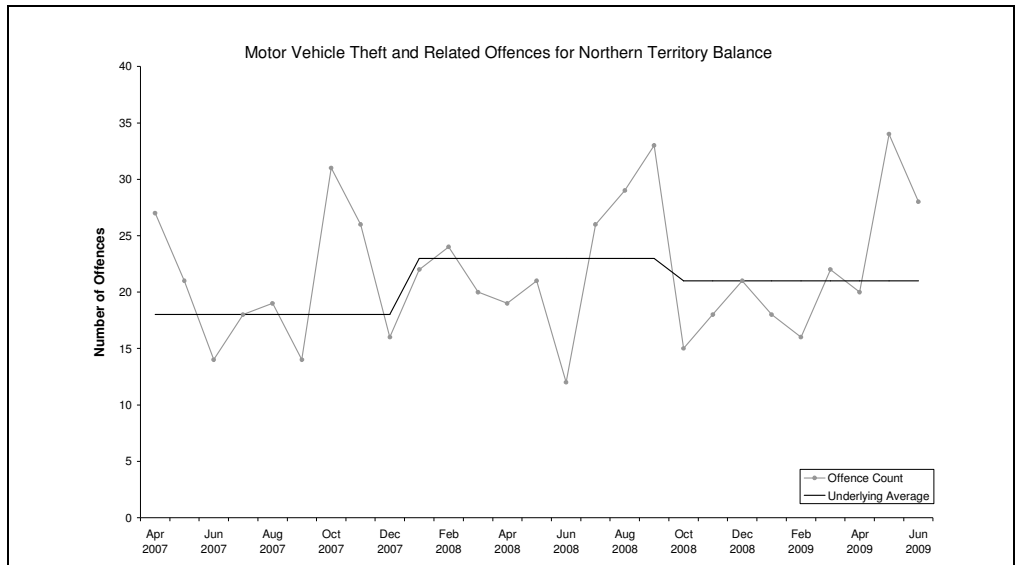
The underlying average smooths out volatility and identifies major changes in the level of crime.

MOTOR VEHICLE THEFT AND RELATED OFFENCES

Underlying average – The underlying average level of *motor vehicle theft and related offences* has ranged between 18 and 23 offences per month during the past nine quarters. Its current level of **21 per month** is in the middle of the range.

Trend – Over the past 12 months no trend was identified.

Quarterly comparisons – There were 82 *motor vehicle theft and related offences* recorded in the current quarter, an **increase of 46% (26)** from the previous quarter and an increase of 58% (30) from the same quarter the previous year.



* Source: The Northern Territory Quarterly Crime & Justice Statistics, Issue 28: June Quarter 2009



Recorded Crime June Quarter 2009

Northern Territory Balance – key findings*

Explanatory Notes

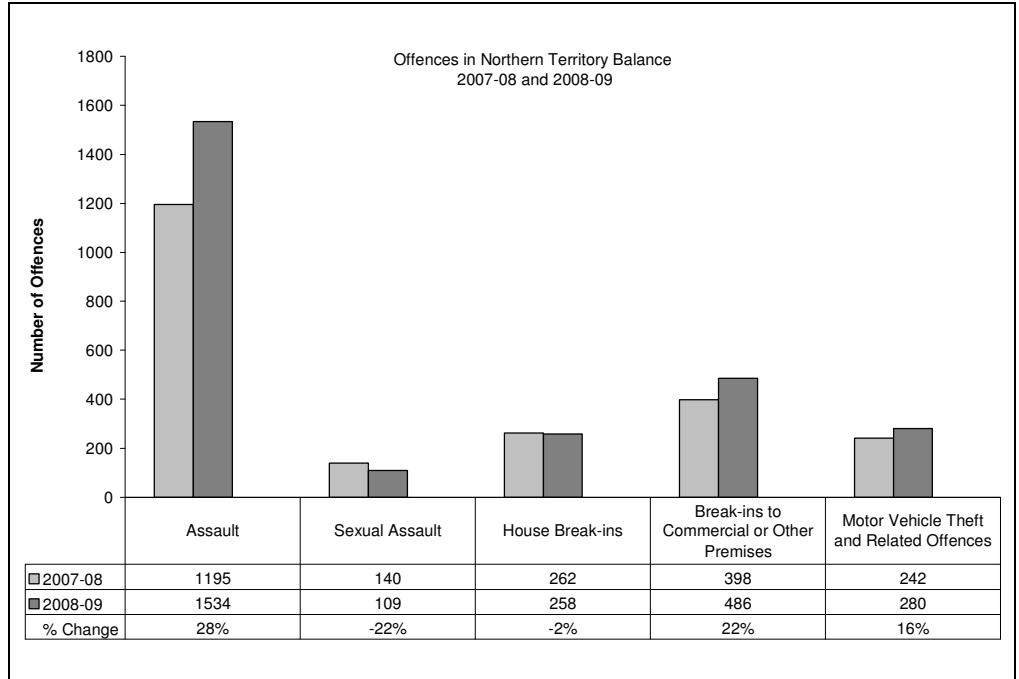
Largely as a result of its small population, statistics in the Northern Territory can be highly volatile with large swings from one period to the next.

Consequently recorded crime statistics are presented over an extended period to present the current period's data within the context of any longer term trends.

The underlying average smooths out volatility and identifies major changes in the level of crime.

TWELVE-MONTH COMPARISON

Twelve-month figures provide comparable information on how crime has tracked from one 12 month period to the next.



Assault

During 2008-09, a total of 1534 *assault* offences were recorded, **28% (339) more** than in 2007-08.

Sexual Assault

During 2008-09, a total of 109 *sexual assault* offences were recorded, **22% (31) less** than in 2007-08.

House Break-ins

During 2008-09, a total of 258 *house break-ins* were recorded, **2% (4) less** than in 2007-08.

Break-ins to Commercial or Other Premises

During 2008-09, a total of 486 *break-ins to commercial or other premises* were recorded, **22% (88) more** than in 2007-08.

Motor Vehicle Theft and Related Offences

During 2008-09, a total of 280 *motor vehicle theft and related offences* were recorded, **16% (38) more** than in 2007-08.

* Source: The Northern Territory Quarterly Crime & Justice Statistics, Issue 28: June Quarter 2009



Recorded Crime June Quarter 2009

Northern Territory Balance – key findings*

Explanatory Notes

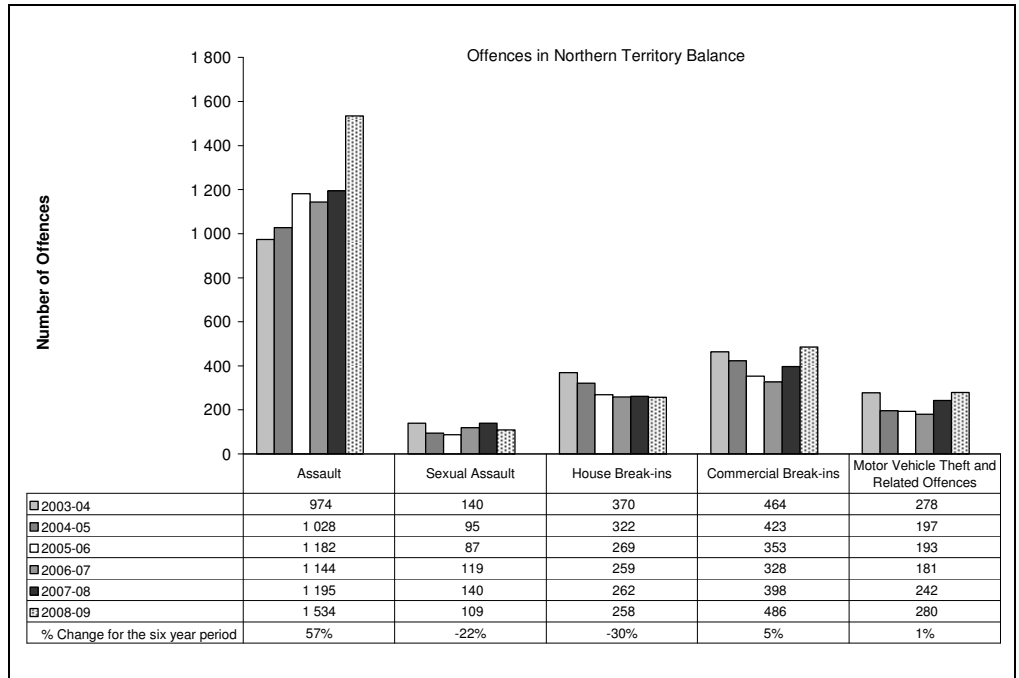
Largely as a result of its small population, statistics in the Northern Territory can be highly volatile with large swings from one period to the next.

Consequently recorded crime statistics are presented over an extended period to present the current period's data within the context of any longer term trends.

The underlying average smooths out volatility and identifies major changes in the level of crime.

SIX YEAR DATA

Data presented over a six year period provides information to see how recorded crimes have tracked in the longer run.



Assault

In late 2004, the Northern Territory Police launched their Violent Crime Reduction Strategy, with a consequential increase in the number of recorded Assault offences in 2005 and subsequent years.

These increases in Assaults largely reflect the impact of operational changes the Police have made in the reporting and recording of domestic violence related Assaults.

During 2008-09, there were 1534 recorded *assault* offences, **57% (560) more** than in 2003-04.

Sexual Assault

During 2008-09, there were 109 recorded *sexual assault* offences, **22% (31) less** than in 2003-04.

House Break-ins

During 2008-09, there were 258 recorded *house break-in* offences, **30% (112) less** than in 2003-04.

Commercial Break-ins

During 2008-09, there were 486 recorded *commercial break-in* offences, **5% (22) more** than in 2003-04.

Motor Vehicle Theft and Related Offences

During 2008-09, there were 280 recorded *motor vehicle theft and related offences*, **1% (2) more** than in 2003-04.

* Source: The Northern Territory Recorded Crime data extract for June Quarter 2009